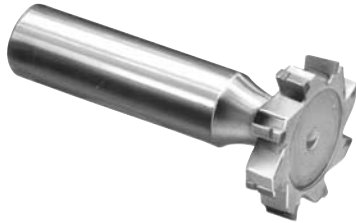
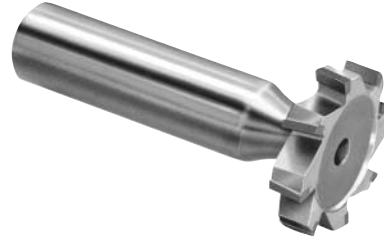


Woodruff Keyseat Cutters – Carbide Tipped

Straight Tooth



Staggered Tooth



Keyseat Cutters - Carbide Tipped

1/2" shanks – Right Hand cut; chip breakers on all tools 5/32" wide and greater.

Amer. Std.	Diam.	Width	Straight	List Price	Staggered	List Price
204	1/2	1/16	TC204	62.43	STC204	73.45
304	1/2	3/32	TC304	62.43	STC304	73.45
404	1/2	1/8	TC404	62.43	STC404	73.45
305	5/8	3/32	TC305	64.65	STC305	76.07
405	5/8	1/8	TC405	64.65	STC405	76.07
505	5/8	5/32	TC505	64.65	STC505	76.07
605	5/8	3/16	TC605	64.65	STC605	76.07
406	3/4	1/8	TC406	67.49	STC406	79.47
506	3/4	5/32	TC506	67.49	STC506	79.47
606	3/4	3/16	TC606	67.49	STC606	79.47
806	3/4	1/4	TC806	67.49	STC806	79.47
507	7/8	5/32	TC507	70.68	STC507	83.09
607	7/8	3/16	TC607	70.68	STC607	83.09
707	7/8	7/32	TC707	70.68	STC707	83.09
807	7/8	1/4	TC807	70.68	STC807	83.09
608	1	3/16	TC608	79.71	STC608	93.78
708	1	7/32	TC708	79.71	STC708	93.78
808	1	1/4	TC808	79.71	STC808	93.78
1008	1	5/16	TC1008	79.71	STC1008	93.78
1208	1	3/8	TC1208	79.71	STC1208	93.78
609	1-1/8	3/16	TC609	83.75	STC609	98.43
709	1-1/8	7/32	TC709	83.75	STC709	98.43
809	1-1/8	1/4	TC809	83.75	STC809	98.43
1009	1-1/8	5/16	TC1009	83.75	STC1009	98.43
610	1-1/4	3/16	TC610	87.94	STC610	103.38
710	1-1/4	7/32	TC710	87.94	STC710	103.38
810	1-1/4	1/4	TC810	87.94	STC810	103.38
1010	1-1/4	5/16	TC1010	87.94	STC1010	103.38
1210	1-1/4	3/8	TC1210	87.94	STC1210	103.38
811	1-3/8	1/4	TC811	92.37	STC811	114.06
1011	1-3/8	5/16	TC1011	92.37	STC1011	114.06
1211	1-3/8	3/8	TC1211	92.37	STC1211	114.06
812	1-1/2	1/4	TC812	97.00	STC812	114.06
1012	1-1/2	5/16	TC1012	97.00	STC1012	114.06
1212	1-1/2	3-8	TC1212	97.00	STC1212	114.06

TiN coating Price On Application