

# Shell End Mills

## General Purpose - Right Hand and Left Hand Helix

General Purpose



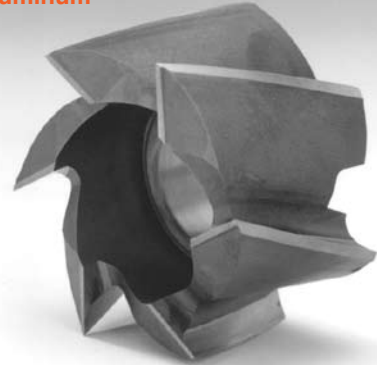
Right Hand Shown

Catalog No. Right Hand	List Price	w/TiN Coating	Diam.	Width	Hole Size	No. of Teeth	Catalog No. Left Hand	List Price	w/TiN Coating
SH1258R	58.75	74.36	1-1/4	1	1/2	8	SH1258L	63.24	78.85
SH158R	61.70	83.91	1-1/2	1-1/8	1/2	8	SH158L	66.18	88.39
SH1758R	76.98	114.71	1-3/4	1-1/4	3/4	8	SH1758L	82.89	120.61
SH210R	86.24	130.89	2	1-3/8	3/4	10	SH210L	92.12	136.77
SH22510R	95.08	149.61	2-1/4	1-1/2	1	10	SH22510L	102.51	157.04
SH2510R	113.73	176.33	2-1/2	1-5/8	1	10	SH2510L	122.70	185.31
SH27510R	141.21	203.83	2-3/4	1-5/8	1	10	SH27510L	148.65	211.25
SH312R	154.54	217.14	3	1-3/4	1-1/4	12	SH312L	169.40	232.01
SH3512R	215.54	286.66	3-1/2	1-7/8	1-1/4	12	SH3512L	230.40	301.53
SH414R	260.13	352.90	4	2-1/4	1-1/2	14	SH414L	275.00	367.77
SH4514R	334.45	427.24	4-1/2	2-1/4	1-1/2	14	SH4514L	349.32	442.10
SH516R	423.65	545.96	5	2-1/4	1-1/2	16	SH516L	445.94	568.26
SH616R	624.30	746.64	6	2-1/4	2	16	SH616L	654.04	776.36

## Aluminum - Right Hand Helix Only

Catalog No.	Diam.	Width	Hole Size	No. of Teeth	List Price	w/TiN Coating
ASH1254	1-1/4	1	1/2	4	65.35	80.95
ASH1504	1-1/2	1-1/8	1/2	4	67.60	92.12
ASH204	2	1-3/8	3/4	4	92.12	136.77
ASH254	2-1/2	1-5/8	1	4	121.86	184.47
ASH306	3	1-3/4	1-1/4	6	170.93	233.55
ASH356	3-1/2	1-7/8	1-1/4	6	260.13	331.27
ASH406	4	2-1/4	1-1/2	6	275.00	336.77
ASH456	4-1/2	2-1/4	1-1/2	6	413.68	506.46
ASH508	5	2-1/4	1-1/2	8	460.80	583.12
ASH608	6	2-1/4	2	8	676.34	798.67

Aluminum



## Cobalt - Right Hand Helix Only

Catalog No.	Diam.	Width	Hole Size	No. of Teeth	List Price	w/TiN Coating
CSH1258	1-1/4	1	1/2	8	82.03	97.90
CSH158	1-1/2	1-1/8	1/2	8	84.67	105.83
CSH1758	1-3/4	1-1/4	3/4	8	129.64	166.69
CSH210	2	1-3/8	3/4	10	129.71	174.36
CSH22510	2-1/4	1-1/2	1	10	138.91	193.15
CSH2510	2-1/2	1-5/8	1	10	169.33	231.51
CSH27510	2-3/4	1-5/8	1	10	203.73	264.59
CSH312	3	1-3/4	1-1/4	12	216.96	277.82
CSH3512	3-1/2	1-7/8	1-1/4	12	310.89	383.65
CSH414	4	2-1/4	1-1/2	14	383.65	476.26
CSH4514	4-1/2	2-1/4	1-1/2	14	*	*
CSH516	5	2-1/4	1-1/2	16	*	*
CSH616	6	2-1/4	2	16	*	*

Cobalt



\*Price On Application