

2012



MOON
Cutter Co., Inc.



**The Leader in Milling Cutters,
Keyseat Cutters, and Saws**



In Loving Memory
Our Founder and Our Father
Charlie D. Moon
1927-2003



*A SKILLED CRAFTSMEN THAT GROUND THE SHARP CORNERS ON THE INDUSTRY
BY SETTING THE STANDARD OF QUALITY MILLING CUTTERS FOR GENERATIONS TO COME.*

When Charlie D. Moon founded the Moon Cutter Co., Inc. in 1957, he envisioned a company that would ensure satisfaction through four basic qualities: competitive prices, speedy delivery, strong customer relations through superior customer service, and engineering the highest quality of milling cutters available. Almost fifty years later, it is still these qualities which have enabled our company to grow successfully for three generations and continue to be your **Leader in Milling Cutters, Keyseat Cutters and Saws.**

The entire Moon family is dedicated to working hard every day to ensure that the long family tradition of service and quality is upheld and the ideology of our father carries over in every aspect of our production. We thank you for your support and consideration. If there is anything we can do for your next cutting tool project please feel free to call and ask for a MOON family expert.

Whether you need a standard tool, alterations to standard tools, or a full blueprint special, our total in-house capabilities will assure you the highest quality tools at the best price, delivered fast and with the personal attention your projects deserve.

Terms and Conditions

Sales Policy: as active members of the Industrial Supply Manufacturers Association (ISMA), we support the value-added services of our partners in industrial distribution. Our products are exclusively sold through selected, authorized industrial distributors who meet our high standards of business ethics and customer service capabilities.



Payment Terms and Prices: net 30 days. Accounts in arrears are subject to both shipment hold and production hold. Prices for special tools are subject to re quoting after 30 days; catalog prices are subject to change without notice. C.O.D. shipments are sent by U.P.S. and C.O.D. Payments are cash, certified check, money order or MC/VISA.

Cancellations: cancellation of orders for "standard catalog product" can be made at no charge providing the tools have not been shipped and we have not incurred labor expenses to finish a specific size or altered standard markings or packaging. A cancellation fee will be charged in proportion to the amount of the cost accumulated on the order prior to cancellation.

Shipping Terms: freight is F.O.B. shipping point. Ground and air shipments ship United Parcel Service unless otherwise specified.



Customer Alterations: Moon Cutter Co., Inc. cannot be responsible for the performance of, or compliance with, specifications, nor can we accept for return, any tool that has been altered in any way by our customers. This includes: surface treatments, coatings, flats, tangs, markings, or any geometric alterations. Any tools altered are non-returnable and voids all warranties.

Over or Undershipments: unless your order specifies "no overshipments," Moon Cutter Co., Inc. policy follows standard industry practice on altered standard and special orders, which is to start +10% over the quantity ordered. We will ship and bill the quantity completed, which could be as much as 10% over or 10% under the quantity ordered. On quantities from one piece to nine pieces, our standard shipping tolerance is plus or minus one piece. Orders for special tooling that specify "no over and no under shipments" (exact quantities) are subject to a premium charge.

Product Warranty: we guarantee our products will conform to the dimensions listed on customer blueprints, orders, and quotation requests. Dimensions, specifications, and tolerances not listed will be furnished to the current United States Cutting Tool Institute manufacturing standards. Our warranty is limited to repair, replacement, or full credit for the tools found not to be within specifications, at our option.



Returned Goods: all returned goods must have a "returned goods authorization number" (RGA). Contact our customer service department to obtain a returned goods authorization number (RGA) prior to returning any material. To ensure proper credit, all returned products must be in clean, resalable condition and in the original packaging. We cannot accept any product that has been discontinued or in quantities that are unusually large as compared to Moon's average sales for any particular item. **Note:** special tools are not returnable.

Photo Index




Side Milling Cutters

	Straight Tooth 6-8
	Full Radius 21
	Staggered Tooth 9-11
	Full Radius 21

Cobalt Side Milling Cutters

	Straight Tooth 12
	Full Radius 21
	Staggered Tooth 12
	Full Radius 21

Shell End Mills

	General Purpose 13
	Aluminum 13
	Cobalt 13

Carbide Tipped Side Milling Cutters

	For Cast Iron 14
------------------------------------------------------------------------------------	----------------------------


	For Non-Ferrous 14
-----------------------------------------------------------------------------------	------------------------------

	For Steel 15
-----------------------------------------------------------------------------------	------------------------



High Speed Steel (H.S.S.) Combined Drills

	and Countersinks 16
-----------------------------------------------------------------------------------	-------------------------------

Corner Rounding End Mills

 16
------------------------------------------------------------------------------------	--------------

T-Slot Cutters

	H.S.S. and Cobalt 17
	Carbide Tipped 17

Dovetail Cutters



	H.S.S. and Cobalt 18
	Carbide Tipped 18

Photo Index

Double Angle Cutters



..... 19

Chamfer Tools



..... 19

Angle Milling Cutters



Single Angle 20



Double Angle 20

Woodruff Keyseat Cutters



Large Diameter 22

Solid Carbide 22



H.S.S. – straight and staggered 23

Cobalt – straight and staggered 23

Carbide Tipped – straight and staggered 24



Narrow Width 25



Arbor Type 26

Plain Milling Cutters



Light Duty 27



Heavy Duty 27

Half Side Milling Cutters



Right Hand 28



Left Hand 28

Metal Slitting Saws



Straight Tooth 29



Full Radius 21



Staggered Tooth 30



Concave Sides 31

Cobalt Slitting Saws



Straight Tooth 32



Staggered Tooth 32

Feeds & Speeds 35

Side Milling Cutters



For Cobalt see page 12.
Full Radius see page 21.

Straight Tooth

All cutters with the same amount of teeth can be interlocked by specifying "A" or "B" cutters and grinding the hubs.

Catalog No.	Cutter Diam.	Width	Hole Size	No. of Teeth	List Price	w/TiN
SM2187	2	3/16	5/8	14	36.46	46.74
SM2250	2	1/4	5/8	14	39.41	49.68
SM2375	2	3/8	5/8	14	41.22	54.94
SM25250	2-1/2	1/4	7/8	18	43.89	56.44
SM25312	2-1/2	5/16	7/8	18	46.83	63.30
SM25375	2-1/2	3/8	7/8	18	49.78	66.24
SM25500	2-1/2	1/2	7/8	18	49.78	70.50
SM3187	3	3/16	1	20	45.86	54.41
SM3187-1	3	3/16	1-1/4	20	54.41	66.95
SM3218	3	7/32	1	20	60.58	73.12
SM3218-1	3	7/32	1-1/4	20	65.85	78.39
SM3250	3	1/4	1	20	47.53	60.07
SM3250-1	3	1/4	1-1/4	20	57.70	70.24
SM3281	3	9/32	1	20	64.65	81.11
SM3281-1	3	9/32	1-1/4	20	64.65	81.11
SM3312	3	5/16	1	20	50.48	66.94
SM3312-1	3	5/16	1-1/4	20	60.79	77.24
SM3343	3	11/32	1	20	73.20	89.65
SM3343-1	3	11/32	1-1/4	20	73.20	89.65
SM3375	3	3/8	1	20	54.69	71.15
SM3375-1	3	3/8	1-1/4	20	64.99	81.45
SM3406	3	13/32	1	20	73.89	94.62
SM3406-1	3	13/32	1-1/4	20	73.89	94.62
SM3437	3	7/16	1	20	57.92	78.63
SM3437-1	3	7/16	1-1/4	20	57.92	78.63
SM3500	3	1/2	1	20	55.39	76.11
SM3500-1	3	1/2	1-1/4	20	64.29	85.01
SM3562	3	9/16	1	20	74.75	103.74
SM3562-1	3	9/16	1-1/4	20	74.75	103.74
SM3625	3	5/8	1	20	75.03	104.03
SM3625-1	3	5/8	1-1/4	20	75.03	104.03

Catalog No.	Cutter Diam.	Width	Hole Size	No. of Teeth	List Price	w/TiN
SM3687	3	11/16	1	20	73.89	102.90
SM3687-1	3	11/16	1-1/4	20	73.89	102.90
SM3750	3	3/4	1	20	78.81	107.81
SM3750-1	3	3/4	1-1/4	20	78.81	107.81
SM3812	3	13/16	1	20	86.24	123.74
SM3812-1	3	13/16	1-1/4	20	86.24	123.74
SM3875	3	7/8	1	20	93.95	131.45
SM3875-1	3	7/8	1-1/4	20	93.95	131.45
SM3937	3	15/16	1	20	98.86	136.35
SM3937-1	3	15/16	1-1/4	20	98.86	136.35
SM3100	3	1	1	20	98.86	136.35
SM3100-1	3	1	1-1/4	20	112.88	150.38
SM35187-20T	3-1/2	3/16	1	20	62.40	74.94
SM35187-24T	3-1/2	3/16	1	24	62.40	74.94
SM35187-1-20T	3-1/2	3/16	1-1/4	20	73.89	86.44
SM35187-1-24T	3-1/2	3/16	1-1/4	24	73.89	86.44
SM35250-20T	3-1/2	1/4	1	20	79.09	91.63
SM35250-24T	3-1/2	1/4	1	24	79.09	91.63
SM35250-1-20T	3-1/2	1/4	1-1/4	20	79.09	91.63
SM35250-1-24T	3-1/2	1/4	1-1/4	24	79.09	91.63
SM35312-20T	3-1/2	5/16	1	20	84.41	100.87
SM35312-24T	3-1/2	5/16	1	24	84.41	100.87
SM35312-1-20T	3-1/2	5/16	1-1/4	20	84.41	100.87
SM35312-1-24T	3-1/2	5/16	1-1/4	24	84.41	100.87
SM35375-20T	3-1/2	3/8	1	20	87.36	103.82
SM35375-24T	3-1/2	3/8	1	24	87.36	103.82
SM35375-1-20T	3-1/2	3/8	1-1/4	20	87.36	103.82
SM35375-1-24T	3-1/2	3/8	1-1/4	24	87.36	103.82
SM35437-20T	3-1/2	7/16	1	20	88.91	109.62
SM35437-24T	3-1/2	7/16	1	24	88.91	109.62
SM35437-1-20T	3-1/2	7/16	1-1/4	20	88.91	109.62
SM35437-1-24T	3-1/2	7/16	1-1/4	24	88.91	109.62
SM35500-20T	3-1/2	1/2	1	20	92.56	113.27
SM35500-24T	3-1/2	1/2	1	24	92.56	113.27
SM35500-1-20T	3-1/2	1/2	1-1/4	20	92.56	113.27
SM35500-1-24T	3-1/2	1/2	1-1/4	24	92.56	113.27
SM35562-20T	3-1/2	9/16	1	20	95.08	124.08
SM35562-24T	3-1/2	9/16	1	24	95.08	124.08
SM35562-1-20T	3-1/2	9/16	1-1/4	20	95.08	124.08
SM35562-1-24T	3-1/2	9/16	1-1/4	24	95.08	124.08
SM35625-20T	3-1/2	5/8	1	20	97.32	126.33
SM35625-24T	3-1/2	5/8	1	24	97.32	126.33
SM35625-1-20T	3-1/2	5/8	1-1/4	20	97.32	126.33
SM35625-1-24T	3-1/2	5/8	1-1/4	24	97.32	126.33
SM35687-20T	3-1/2	11/16	1	20	99.57	128.56
SM35687-24T	3-1/2	11/16	1	24	99.57	128.56
SM35687-1-20T	3-1/2	11/16	1-1/4	20	99.57	128.56
SM35687-1-24T	3-1/2	11/16	1-1/4	24	99.57	128.56
SM35750-20T	3-1/2	3/4	1	20	104.75	133.75
SM35750-24T	3-1/2	3/4	1	24	104.75	133.75
SM35750-1-20T	3-1/2	3/4	1-1/4	20	104.75	133.75
SM35750-1-24T	3-1/2	3/4	1-1/4	24	104.75	133.75
SM35812-20T	3-1/2	13/16	1	20	106.73	144.20
SM35812-24T	3-1/2	13/16	1	24	106.73	144.20
SM35812-1-20T	3-1/2	13/16	1-1/4	20	106.73	144.20
SM35812-1-24T	3-1/2	13/16	1-1/4	24	106.73	144.20

Side Milling Cutters

**CORNER RADIUS-ALTERED WIDTH
ALL TOOLS IN THIS CATALOG
CAN BE ALTERED AND SHIPPED
IN LESS THAN 48 HOURS**

Straight Tooth (continued)

Catalog No.	Cutter Diam.	Width	Hole Size	No. of Teeth	List Price	w/TiN
SM35875-20T	3-1/2	7/8	1	20	109.23	146.73
SM35875-24T	3-1/2	7/8	1	24	109.23	146.73
SM35875-1-20T	3-1/2	7/8	1-1/4	20	109.23	146.73
SM35875-1-24T	3-1/2	7/8	1-1/4	24	109.23	146.73
SM35937-20T	3-1/2	15/16	1	20	130.84	168.33
SM35937-24T	3-1/2	15/16	1	24	130.84	168.33
SM35937-1-20T	3-1/2	15/16	1-1/4	20	156.08	193.57
SM35937-1-24T	3-1/2	15/16	1-1/4	24	156.08	193.57
SM35100-20T	3-1/2	1	1	20	113.03	150.51
SM35100-24T	3-1/2	1	1	24	113.03	150.51
SM35100-1-20T	3-1/2	1	1-1/4	20	113.03	150.51
SM35100-1-24T	3-1/2	1	1-1/4	24	113.03	150.51
SM4187	4	3/16	1	24	59.45	73.58
SM4187-1	4	3/16	1-1/4	24	88.77	102.88
SM4218	4	7/32	1	24	82.88	96.99
SM4218-1	4	7/32	1-1/4	24	82.88	96.99
SM4250	4	1/4	1	24	61.00	75.12
SM4250-1	4	1/4	1-1/4	24	77.68	91.98
SM4281	4	9/32	1	24	84.69	103.70
SM4281-1	4	9/32	1-1/4	24	84.69	103.70
SM4312	4	5/16	1	24	81.05	100.05
SM4312-1	4	5/16	1-1/4	24	81.05	100.05
SM4343	4	11/32	1	24	86.39	105.39
SM4343-1	4	11/32	1-1/4	24	86.39	105.39
SM4375	4	3/8	1	24	69.56	88.56
SM4375-1	4	3/8	1-1/4	24	82.32	101.33
SM4406	4	13/32	1	24	93.95	117.35
SM4406-1	4	13/32	1-1/4	24	93.95	117.35
SM4437	4	7/16	1	24	90.87	114.27
SM4437-1	4	7/16	1-1/4	24	90.87	114.27
SM4500	4	1/2	1	24	78.39	101.79
SM4500-1	4	1/2	1-1/4	24	78.39	101.79
SM4562	4	9/16	1	24	98.30	130.09
SM4562-1	4	9/16	1-1/4	24	98.30	130.09
SM4625	4	5/8	1	24	88.77	120.55
SM4625-1	4	5/8	1-1/4	24	88.77	120.55
SM4687	4	11/16	1	24	107.00	138.78
SM4687-1	4	11/16	1-1/4	24	107.00	138.78
SM4750	4	3/4	1	24	96.76	128.55
SM4750-1	4	3/4	1-1/4	24	96.76	128.55
SM4812	4	13/16	1	24	113.31	154.09
SM4812-1	4	13/16	1-1/4	24	113.31	154.09
SM4875	4	7/8	1	24	105.87	146.66
SM4875-1	4	7/8	1-1/4	24	105.87	146.66
SM4937	4	15/16	1	24	132.24	173.03
SM4937-1	4	15/16	1-1/4	24	132.24	173.03

Catalog No.	Cutter Diam.	Width	Hole Size	No. of Teeth	List Price	w/TiN
SM4100	4	1	1	24	138.55	179.33
SM4100-1	4	1	1-1/4	24	138.55	179.33
SM45187	4-1/2	3/16	1	24	81.05	95.17
SM45187-1	4-1/2	3/16	1-1/4	24	107.00	121.11
SM45250	4-1/2	1/4	1	24	85.11	99.24
SM45250-1	4-1/2	1/4	1-1/4	24	85.11	99.24
SM45312	4-1/2	5/16	1	24	89.89	108.89
SM45312-1	4-1/2	5/16	1-1/4	24	89.89	108.89
SM45375	4-1/2	3/8	1	24	95.91	114.91
SM45375-1	4-1/2	3/8	1-1/4	24	95.91	114.91
SM45437	4-1/2	7/16	1	24	107.00	130.40
SM45437-1	4-1/2	7/16	1-1/4	24	118.92	142.32
SM45500	4-1/2	1/2	1	24	106.73	130.11
SM45500-1	4-1/2	1/2	1-1/4	24	106.73	130.11
SM45562	4-1/2	9/16	1	24	118.92	150.69
SM45562-1	4-1/2	9/16	1-1/4	24	136.30	168.51
SM45625	4-1/2	5/8	1	24	113.31	145.09
SM45625-1	4-1/2	5/8	1-1/4	24	113.31	145.09
SM45687	4-1/2	11/16	1	24	133.78	165.56
SM45687-1	4-1/2	11/16	1-1/4	24	145.69	177.49
SM45750	4-1/2	3/4	1	24	122.98	154.77
SM45750-1	4-1/2	3/4	1-1/4	24	122.98	154.77
SM45812	4-1/2	13/16	1	24	136.60	177.51
SM45812-1	4-1/2	13/16	1-1/4	24	156.08	196.86
SM45875	4-1/2	7/8	1	24	136.03	176.81
SM45875-1	4-1/2	7/8	1-1/4	24	136.03	176.81
SM45937	4-1/2	15/16	1	24	154.53	195.32
SM45937-1	4-1/2	15/16	1-1/4	24	169.40	210.19
SM45100	4-1/2	1	1	24	159.31	200.09
SM45100-1	4-1/2	1	1-1/4	24	159.31	200.09
SM5187	5	3/16	1	24	78.39	103.57
SM5187-1	5	3/16	1-1/4	24	104.05	129.23
SM5218	5	7/32	1	24	104.05	129.23
SM5218-1	5	7/32	1-1/4	24	104.05	129.23
SM5250	5	1/4	1	24	101.24	126.44
SM5250-1	5	1/4	1-1/4	24	101.24	126.44
SM5281	5	9/32	1	24	113.31	144.05
SM5281-1	5	9/32	1-1/4	24	113.31	144.05
SM5312	5	5/16	1	24	107.14	137.89
SM5312-1	5	5/16	1-1/4	24	107.14	137.89
SM5343	5	11/32	1	24	114.15	144.90
SM5343-1	5	11/32	1-1/4	24	114.15	144.90
SM5375	5	3/8	1	24	114.85	145.61
SM5375-1	5	3/8	1-1/4	24	114.85	145.61
SM5406	5	13/32	1	24	121.86	158.01
SM5406-1	5	13/32	1-1/4	24	121.86	158.01
SM5437	5	7/16	1	24	123.55	159.69
SM5437-1	5	7/16	1-1/4	24	123.55	159.69
SM5500	5	1/2	1	24	106.29	142.44
SM5500-1	5	1/2	1-1/4	24	106.29	142.44
SM5562	5	9/16	1	24	137.15	184.39
SM5562-1	5	9/16	1-1/4	24	137.15	184.39
SM5625	5	5/8	1	24	117.80	165.03
SM5625-1	5	5/8	1-1/4	24	117.80	165.03
SM5687	5	11/16	1	24	145.28	192.52
SM5687-1	5	11/16	1-1/4	24	145.28	192.52

Side Milling Cutters

Straight Tooth (continued)

Catalog No.	Cutter Diam.	Width	Hole Size	No. of Teeth	List Price	w/TiN
SM5750	5	3/4	1	24	133.78	181.03
SM5750-1	5	3/4	1-1/4	24	133.78	181.03
SM5812	5	13/16	1	24	154.96	212.48
SM5812-1	5	13/16	1-1/4	24	154.96	212.48
SM5875	5	7/8	1	24	159.86	217.38
SM5875-1	5	7/8	1-1/4	24	159.86	217.38
SM5937	5	15/16	1	24	165.33	222.85
SM5937-1	5	15/16	1-1/4	24	165.33	222.85
SM5100	5	1	1	24	174.03	231.55
SM5100-1	5	1	1-1/4	24	160.14	217.56
SM55187-24T	5-1/2	3/16	1	24	106.73	131.90
SM55187-28T	5-1/2	3/16	1	28	106.73	131.90
SM55187-1-24T	5-1/2	3/16	1-1/4	24	122.70	147.90
SM55187-1-28T	5-1/2	3/16	1-1/4	28	122.70	147.90
SM55250-24T	5-1/2	1/4	1	24	111.91	137.10
SM55250-28T	5-1/2	1/4	1	28	111.91	137.10
SM55250-1-24T	5-1/2	1/4	1-1/4	24	111.91	137.10
SM55250-1-28T	5-1/2	1/4	1-1/4	28	111.91	137.10
SM55312-24T	5-1/2	5/16	1	24	114.99	145.75
SM55312-28T	5-1/2	5/16	1	28	114.99	145.75
SM55312-1-24T	5-1/2	5/16	1-1/4	24	114.99	145.75
SM55312-1-28T	5-1/2	5/16	1-1/4	28	114.99	145.75
SM55375-24T	5-1/2	3/8	1	24	130.97	161.73
SM55375-28T	5-1/2	3/8	1	28	130.97	161.73
SM55375-1-24T	5-1/2	3/8	1-1/4	24	130.97	161.73
SM55375-1-28T	5-1/2	3/8	1-1/4	28	130.97	161.73
SM55437-24T	5-1/2	7/16	1	24	147.10	183.25
SM55437-28T	5-1/2	7/16	1	28	147.10	183.25
SM55437-1-24T	5-1/2	7/16	1-1/4	24	147.10	183.25
SM55437-1-28T	5-1/2	7/16	1-1/4	28	147.10	183.25
SM55500-24T	5-1/2	1/2	1	24	140.51	176.67
SM55500-28T	5-1/2	1/2	1	28	140.51	176.67
SM55500-1-24T	5-1/2	1/2	1-1/4	24	140.51	176.67
SM55500-1-28T	5-1/2	1/2	1-1/4	28	140.51	176.67
SM55562-24T	5-1/2	9/16	1	24	163.51	210.75
SM55562-28T	5-1/2	9/16	1	28	163.51	210.75
SM55562-1-24T	5-1/2	9/16	1-1/4	24	163.51	210.75
SM55562-1-28T	5-1/2	9/16	1-1/4	28	163.51	210.75
SM55625-24T	5-1/2	5/8	1	24	152.01	199.26
SM55625-28T	5-1/2	5/8	1	28	152.01	199.26
SM55625-1-24T	5-1/2	5/8	1-1/4	24	152.01	199.26
SM55625-1-28T	5-1/2	5/8	1-1/4	28	152.01	199.26
SM55687-24T	5-1/2	11/16	1	24	179.92	227.16
SM55687-28T	5-1/2	11/16	1	28	179.92	227.16
SM55687-1-24T	5-1/2	11/16	1-1/4	24	179.92	227.16
SM55687-1-28T	5-1/2	11/16	1-1/4	28	179.92	227.16
SM55750-24T	5-1/2	3/4	1	24	164.62	211.89
SM55750-28T	5-1/2	3/4	1	28	164.62	211.89
SM55750-1-24T	5-1/2	3/4	1-1/4	24	164.62	211.89
SM55750-1-28T	5-1/2	3/4	1-1/4	28	164.62	211.89
SM55812-24T	5-1/2	13/16	1	24	196.18	253.70
SM55812-28T	5-1/2	13/16	1	28	196.18	253.70
SM58812-1-24T	5-1/2	13/16	1-1/4	24	196.18	253.70
SM55812-1-28T	5-1/2	13/16	1-1/4	28	196.18	253.70
SM55875-24T	5-1/2	7/8	1	24	186.22	243.75

Catalog No.	Cutter Diam.	Width	Hole Size	No. of Teeth	List Price	w/TiN
SM55875-28T	5-1/2	7/8	1	28	186.22	243.75
SM55875-1-24T	5-1/2	7/8	1-1/4	24	186.22	243.75
SM55875-1-28T	5-1/2	7/8	1-1/4	28	186.22	243.75
SM55937-24T	5-1/2	15/16	1	24	211.04	268.56
SM55937-28T	5-1/2	15/16	1	28	211.04	268.56
SM55937-1-24T	5-1/2	15/16	1-1/4	24	211.04	268.56
SM55937-1-28T	5-1/2	15/16	1-1/4	28	211.04	268.56
SM55100-24T	5-1/2	1	1	24	189.45	246.97
SM55100-28T	5-1/2	1	1	28	189.45	246.97
SM55100-1-24T	5-1/2	1	1-1/4	24	189.45	246.97
SM55100-1-28T	5-1/2	1	1-1/4	28	189.45	246.97
SM6187	6	3/16	1	28	106.73	131.90
SM6187-1	6	3/16	1-1/4	28	106.73	131.90
SM6218	6	7/32	1	28	143.88	169.05
SM6218-1	6	7/32	1-1/4	28	143.88	169.05
SM6250	6	1/4	1	28	124.52	149.72
SM6250-1	6	1/4	1-1/4	28	124.52	149.72
SM6281	6	9/32	1	28	130.56	161.31
SM6281-1	6	9/32	1-1/4	28	138.40	169.16
SM6312	6	5/16	1	28	137.15	167.90
SM6312-1	6	5/16	1-1/4	28	137.15	167.90
SM6343	6	11/32	1	28	152.43	183.19
SM6343-1	6	11/32	1-1/4	28	152.43	183.19
SM6375	6	3/8	1	28	147.10	177.85
SM6375-1	6	3/8	1-1/4	28	147.10	177.85
SM6406	6	13/32	1	28	161.27	197.40
SM6406-1	6	13/32	1-1/4	28	161.27	197.40
SM6437	6	7/16	1	28	155.38	191.52
SM6437-1	6	7/16	1-1/4	28	155.38	191.52
SM6500	6	1/2	1	28	136.73	172.86
SM6500-1	6	1/2	1-1/4	28	136.73	172.86
SM6562	6	9/16	1	28	172.76	220.02
SM6562-1	6	9/16	1-1/4	28	172.76	220.02
SM6625	6	5/8	1	28	173.55	220.78
SM6625-1	6	5/8	1-1/4	28	150.33	197.58
SM6687	6	11/16	1	28	189.16	236.42
SM6687-1	6	11/16	1-1/4	28	189.16	236.42
SM6750	6	3/4	1	28	176.84	224.08
SM6750-1	6	3/4	1-1/4	28	176.84	224.08
SM6812	6	13/16	1	28	203.33	260.85
SM6812-1	6	13/16	1-1/4	28	203.33	260.85
SM6875	6	7/8	1	28	209.92	267.44
SM6875-1	6	7/8	1-1/4	28	209.92	267.44
SM6937	6	15/16	1	28	222.97	280.49
SM6937-1	6	15/16	1-1/4	28	222.97	280.49
SM6100	6	1	1	28	221.92	279.44
SM6100-1	6	1	1-1/4	28	208.52	266.04
SM7500-1	7	1/2	1-1/4	28	252.42	310.32
SM7750-1	7	3/4	1-1/4	28	270.65	328.55
SM7100-1	7	1	1-1/4	28	456.71	518.53
SM8312-1	8	5/16	1-1/4	34	298.84	347.11
SM8375-1	8	3/8	1-1/4	34	314.82	363.10
SM8500-1	8	1/2	1-1/4	34	314.82	372.72
SM8750-1	8	3/4	1-1/4	34	321.41	397.34
SM8750-2	8	3/4	1-1/2	34	321.41	397.34
SM8100-1	8	1	1-1/4	34	392.50	485.97

Side Milling Cutters

**CORNER RADIUS-ALTERED WIDTH
ALL TOOLS IN THIS CATALOG
CAN BE ALTERED AND SHIPPED
IN LESS THAN 48 HOURS**

Staggered Tooth

Please specify the number of teeth desired when ordering these cutters. All Staggered Tooth Cutters with the same amount of teeth can be interlocked by grinding hubs.



For cobalt see page 12. Full Radius see page 21.

Catalog No.	Cutter Diam.	Width	Hole Size	No. of Teeth	List Price	w/TiN
STM25250	2-1/2	1/4	7/8	16	53.15	65.69
STM25312	2-1/2	5/16	7/8	16	53.15	69.62
STM25375	2-1/2	3/8	7/8	16	60.59	77.04
STM25500	2-1/2	1/2	7/8	16	63.53	84.24
STM3187	3	3/16	1	18	51.33	63.87
STM3187-1	3	3/16	1-1/4	18	51.33	63.87
STM3218	3	7/32	1	18	59.59	72.14
STM3218-1	3	7/32	1-1/4	18	59.59	72.14
STM3250	3	1/4	1	18	54.97	67.51
STM3250-1	3	1/4	1-1/4	18	59.59	72.14
STM3281	3	9/32	1	18	71.38	87.85
STM3281-1	3	9/32	1-1/4	18	71.38	87.85
STM3312	3	5/16	1	18	61.00	77.46
STM3312-1	3	5/16	1-1/4	18	71.38	87.85
STM3343	3	11/32	1	18	71.38	87.85
STM3343-1	3	11/32	1-1/4	18	71.38	87.85
STM3375	3	3/8	1	18	62.40	78.86
STM3375-1	3	3/8	1-1/4	18	74.33	90.78
STM3406	3	13/32	1	18	78.81	99.52
STM3406-1	3	13/32	1-1/4	18	78.81	99.52
STM3437	3	7/16	1	18	77.27	97.99
STM3437-1	3	7/16	1-1/4	18	77.27	97.99
STM3500	3	1/2	1	18	78.81	99.52
STM3500-1	3	1/2	1-1/4	18	68.44	89.15
STM3562	3	9/16	1	18	83.29	112.30
STM3562-1	3	9/16	1-1/4	18	83.29	112.30
STM3625	3	5/8	1	18	92.12	121.13
STM3625-1	3	5/8	1-1/4	18	77.27	106.27
STM3687	3	11/16	1	18	95.08	124.08
STM3687-1	3	11/16	1-1/4	18	95.08	124.08
STM3750	3	3/4	1	18	98.16	127.16
STM3750-1	3	3/4	1-1/4	18	86.24	115.24
STM3812	3	13/16	1	18	101.11	138.59
STM3812-1	3	13/16	1-1/4	18	101.11	138.59
STM3875	3	7/8	1	18	104.05	141.54
STM3875-1	3	7/8	1-1/4	18	104.05	141.54

Catalog No.	Cutter Diam.	Width	Hole Size	No. of Teeth	List Price	w/TiN
STM3937	3	15/16	1	18	111.49	148.98
STM3937-1	3	15/16	1-1/4	18	111.49	148.98
STM3100	3	1	1	18	109.93	147.43
STM3100-1	3	1	1-1/4	18	109.93	147.43
STM31250	3	1-1/4	1	18	145.84	191.74
STM31250-1	3	1-1/4	1-1/4	18	145.84	191.74
STM35218	3-1/2	7/32	1	18	95.08	109.20
STM35218-1	3-1/2	7/32	1-1/4	18	95.08	109.20
STM35250	3-1/2	1/4	1	18	98.16	112.29
STM35250-1	3-1/2	1/4	1-1/4	18	98.16	112.29
STM35281	3-1/2	9/32	1	18	102.51	121.51
STM35281-1	3-1/2	9/32	1-1/4	18	102.51	121.51
STM35312	3-1/2	5/16	1	18	104.05	123.06
STM35312-1	3-1/2	5/16	1-1/4	18	104.05	123.06
STM35343	3-1/2	11/32	1	18	105.59	124.59
STM35343-1	3-1/2	11/32	1-1/4	18	105.59	124.59
STM35375	3-1/2	3/8	1	18	96.21	115.20
STM35375-1	3-1/2	3/8	1-1/4	18	96.21	115.20
STM35406	3-1/2	13/32	1	18	108.53	131.93
STM35406-1	3-1/2	13/32	1-1/4	18	108.53	131.93
STM35437	3-1/2	7/16	1	18	102.22	125.63
STM35437-1	3-1/2	7/16	1-1/4	18	102.22	125.63
STM35500	3-1/2	1/2	1	18	101.11	124.50
STM35500-1	3-1/2	1/2	1-1/4	18	117.37	140.78
STM35562	3-1/2	9/16	1	18	113.03	144.81
STM35562-1	3-1/2	9/16	1-1/4	18	118.92	150.69
STM35625	3-1/2	5/8	1	18	124.80	156.60
STM35625-1	3-1/2	5/8	1-1/4	18	124.80	156.60
STM35687	3-1/2	11/16	1	18	118.92	150.69
STM35687-1	3-1/2	11/16	1-1/4	18	127.88	159.68
STM35750	3-1/2	3/4	1	18	121.86	153.64
STM35750-1	3-1/2	3/4	1-1/4	18	130.84	162.62
STM35812	3-1/2	13/16	1	18	133.78	174.57
STM35812-1	3-1/2	13/16	1-1/4	18	133.78	174.57

Side Milling Cutters

Staggered Tooth (continued)

Catalog No.	Cutter Diam.	Width	Hole Size	No. of Teeth	List Price	w/TiN
STM35875	3-1/2	7/8	1	18	139.68	180.46
STM35875-1	3-1/2	7/8	1-1/4	18	139.68	180.46
STM35937	3-1/2	15/16	1	18	154.53	195.32
STM35937-1	3-1/2	15/16	1-1/4	18	154.53	195.32
STM35100	3-1/2	1	1	18	163.51	204.30
STM35100-1	3-1/2	1	1-1/4	18	163.51	204.30
STM4187	4	3/16	1	18	84.14	98.27
STM4187-1	4	3/16	1-1/4	18	84.14	98.27
STM4218	4	7/32	1	18	95.35	109.49
STM4218-1	4	7/32	1-1/4	18	95.35	109.49
STM4250	4	1/4	1	18	95.08	109.20
STM4250-1	4	1/4	1-1/4	18	83.29	97.42
STM4281	4	9/32	1	18	98.16	117.16
STM4281-1	4	9/32	1-1/4	18	98.16	117.16
STM4312	4	5/16	1	18	99.57	118.56
STM4312-1	4	5/16	1-1/4	18	83.29	102.30
STM4343	4	11/32	1	18	107.00	125.99
STM4343-1	4	11/32	1-1/4	18	107.00	125.99
STM4375	4	3/8	1	18	104.05	123.06
STM4375-1	4	3/8	1-1/4	18	83.29	102.30
STM4406	4	13/32	1	18	109.93	133.34
STM4406-1	4	13/32	1-1/4	18	109.93	133.34
STM4437	4	7/16	1	18	111.06	134.46
STM4437-1	4	7/16	1-1/4	18	89.20	112.58
STM4500	4	1/2	1	18	113.03	136.43
STM4500-1	4	1/2	1-1/4	18	95.08	118.49
STM4531	4	17/32	1	18	121.86	164.04
STM4562	4	9/16	1	18	121.86	164.04
STM4562-1	4	9/16	1-1/4	18	121.86	164.04
STM4625	4	5/8	1	18	126.35	158.13
STM4625-1	4	5/8	1-1/4	18	109.93	141.73
STM4687	4	11/16	1	18	135.32	167.11
STM4687-1	4	11/16	1-1/4	18	135.32	167.11
STM4750	4	3/4	1	18	139.68	171.45
STM4750-1	4	3/4	1-1/4	18	115.97	147.75
STM4812	4	13/16	1	18	145.69	186.49
STM4812-1	4	13/16	1-1/4	18	145.69	186.49
STM4875	4	7/8	1	18	145.69	186.49
STM4875-1	4	7/8	1-1/4	18	121.86	162.66
STM4937	4	15/16	1	18	163.51	204.30
STM4937-1	4	15/16	1-1/4	18	163.51	204.30
STM4100	4	1	1	18	170.93	211.73
STM4100-1	4	1	1-1/4	18	170.93	211.73
STM41125-1	4	1-1/8	1-1/4	18	185.80	235.21
STM41187-1	4	1-3/16	1-1/4	18	188.75	238.17
STM41250-1	4	1-1/4	1-1/4	18	190.29	239.71
STM41375-1	4	1-3/8	1-1/4	18	211.04	269.13
STM41500-1	4	1-1/2	1-1/4	18	217.08	275.14
STM45218-18T	4-1/2	7/32	1	18	113.03	127.15
STM45218-24T	4-1/2	7/32	1	24	113.03	127.15
STM45218-1-18T	4-1/2	7/32	1-1/4	18	113.03	127.15
STM45218-1-24T	4-1/2	7/32	1-1/4	24	113.03	127.15
STM45250-18T	4-1/2	1/4	1	18	113.03	127.15
STM45250-24T	4-1/2	1/4	1	24	113.03	127.15
STM45250-1-18T	4-1/2	1/4	1-1/4	18	113.03	127.15
STM45250-1-24T	4-1/2	1/4	1-1/4	24	113.03	127.15

Catalog No.	Cutter Diam.	Width	Hole Size	No. of Teeth	List Price	w/TiN
STM45312-18T	4-1/2	5/16	1	18	118.92	137.92
STM45312-24T	4-1/2	5/16	1	24	118.92	137.92
STM45312-1-18T	4-1/2	5/16	1-1/4	18	118.92	137.92
STM45312-1-24T	4-1/2	5/16	1-1/4	24	118.92	137.92
STM45375-18T	4-1/2	3/8	1	18	127.88	146.90
STM45375-24T	4-1/2	3/8	1	24	127.88	146.90
STM45375-1-18T	4-1/2	3/8	1-1/4	18	127.88	146.90
STM45375-1-24T	4-1/2	3/8	1-1/4	24	127.88	146.90
STM45500-18T	4-1/2	1/2	1	18	141.21	164.61
STM45500-24T	4-1/2	1/2	1	24	141.21	164.61
STM45500-1-18T	4-1/2	1/2	1-1/4	18	141.21	164.61
STM45500-1-24T	4-1/2	1/2	1-1/4	24	141.21	164.61
STM45625-18T	4-1/2	5/8	1	18	163.51	195.30
STM45625-24T	4-1/2	5/8	1	24	163.51	195.30
STM45625-1-18T	4-1/2	5/8	1-1/4	18	163.51	195.30
STM45625-1-24T	4-1/2	5/8	1-1/4	24	163.51	195.30
STM45750-18T	4-1/2	3/4	1	18	170.93	202.73
STM45750-24T	4-1/2	3/4	1	24	170.93	202.73
STM45750-1-18T	4-1/2	3/4	1-1/4	18	170.93	202.73
STM45750-1-24T	4-1/2	3/4	1-1/4	24	170.93	202.73
STM45875-18T	4-1/2	7/8	1	18	208.89	248.90
STM45875-24T	4-1/2	7/8	1	24	208.89	248.90
STM45875-1-18T	4-1/2	7/8	1-1/4	18	208.89	248.90
STM45875-1-24T	4-1/2	7/8	1-1/4	24	208.89	248.90
STM45100-18T	4-1/2	1	1	18	234.89	275.67
STM45100-24T	4-1/2	1	1	24	234.89	275.67
STM45100-1-18T	4-1/2	1	1-1/4	18	234.89	275.67
STM45100-1-24T	4-1/2	1	1-1/4	24	234.89	275.67
STM451250-18T	4-1/2	1-1/4	1	18	267.56	316.97
STM451250-24T	4-1/2	1-1/4	1	24	267.56	316.97
STM451250-1-18T	4-1/2	1-1/4	1-1/4	18	267.56	316.97
STM451250-1-24T	4-1/2	1-1/4	1-1/4	24	267.56	316.97
STM5218	5	7/32	1	24	139.68	164.85
STM5218-1	5	7/32	1-1/4	24	139.68	164.85
STM5250	5	1/4	1	24	130.84	156.03
STM5250-1	5	1/4	1-1/4	24	130.84	156.03
STM5281	5	9/32	1	24	145.69	176.45
STM5281-1	5	9/32	1-1/4	24	145.69	176.45
STM5312	5	5/16	1	24	139.68	170.42
STM5312-1	5	5/16	1-1/4	24	139.68	170.42
STM5343	5	11/32	1	24	154.53	185.28
STM5343-1	5	11/32	1-1/4	24	154.53	185.28
STM5375	5	3/8	1	24	151.60	182.34
STM5375-1	5	3/8	1-1/4	24	151.60	182.34

**CORNER RADIUS-ALTERED WIDTH
ALL TOOLS IN THIS CATALOG
CAN BE ALTERED AND SHIPPED
IN LESS THAN 48 HOURS**

Side Milling Cutters

Staggered Tooth (continued)

Catalog No.	Cutter Diam.	Width	Hole Size	No. of Teeth	List Price	w/TiN
STM5406	5	13/32	1	24	166.45	202.61
STM5406-1	5	13/32	1-1/4	24	166.45	202.61
STM5437	5	7/16	1	24	163.51	199.96
STM5437-1	5	7/16	1-1/4	24	163.51	199.96
STM5468	5	15/32	1	24	170.93	207.09
STM5468-1	5	15/32	1-1/4	24	170.93	207.09
STM5500	5	1/2	1	24	170.93	207.09
STM5500-1	5	1/2	1-1/4	24	128.87	165.02
STM5531-1	5	17/32	1-1/4	24	178.37	225.62
STM5562	5	9/16	1	24	182.30	229.54
STM5562-1	5	9/16	1-1/4	24	170.93	218.19
STM5593-1	5	19/32	1-1/4	24	178.37	225.62
STM5625	5	5/8	1	24	154.53	201.79
STM5625-1	5	5/8	1-1/4	24	145.69	192.95
STM5687	5	11/16	1	24	190.29	237.55
STM5687-1	5	11/16	1-1/4	24	178.37	225.62
STM5750	5	3/4	1	24	193.24	240.48
STM5750-1	5	3/4	1-1/4	24	160.56	207.80
STM5812	5	13/16	1	24	217.08	274.60
STM5812-1	5	13/16	1-1/4	24	202.21	259.73
STM5875	5	7/8	1	24	225.91	283.44
STM5875-1	5	7/8	1-1/4	24	211.04	268.56
STM5937-1	5	15/16	1-1/4	24	228.85	286.37
STM5100	5	1	1	24	222.97	280.49
STM5100-1	5	1	1-1/4	24	222.97	280.49
STM51250-1	5	1-1/4	1-1/4	24	260.13	328.75
STM51500-1	5	1-1/2	1-1/4	24	270.50	328.75
STM55250	5-1/2	1/4	1	24	145.69	170.88
STM55250-1	5-1/2	1/4	1-1/4	24	145.69	170.88
STM55312	5-1/2	5/16	1	24	170.93	201.69
STM55312-1	5-1/2	5/16	1-1/4	24	170.93	201.69
STM55375	5-1/2	3/8	1	24	170.93	201.69
STM55375-1	5-1/2	3/8	1-1/4	24	170.93	201.69
STM55500	5-1/2	1/2	1	24	200.67	236.82
STM55500-1	5-1/2	1/2	1-1/4	24	200.67	236.82
STM55625	5-1/2	5/8	1	24	211.04	258.29
STM55625-1	5-1/2	5/8	1-1/4	24	208.09	255.36
STM55750	5-1/2	3/4	1	24	220.02	267.27
STM55750-1	5-1/2	3/4	1-1/4	24	208.09	267.27
STM55875	5-1/2	7/8	1	24	239.79	297.31
STM55875-1	5-1/2	7/8	1-1/4	24	239.79	297.31
STM55100	5-1/2	1	1	24	249.61	307.13
STM55100-1	5-1/2	1	1-1/4	24	249.61	307.13
STM551250	5-1/2	1-1/4	1	24	305.49	374.11
STM551250-1	5-1/2	1-1/4	1-1/4	24	305.49	374.11
STM6250	6	1/4	1	24	175.44	200.61
STM6250-1	6	1/4	1-1/4	24	175.44	200.61
STM6281	6	9/32	1	24	200.67	231.42
STM6281-1	6	9/32	1-1/4	24	200.67	231.42
STM6312	6	5/16	1	24	181.32	212.07
STM6312-1	6	5/16	1-1/4	24	181.32	212.07
STM6343	6	11/32	1	24	208.09	238.85
STM6343-1	6	11/32	1-1/4	24	208.09	238.85
STM6375	6	3/8	1	24	193.24	223.98
STM6375-1	6	3/8	1-1/4	24	148.64	179.40

For Cobalt
see page 12.



Catalog No.	Cutter Diam.	Width	Hole Size	No. of Teeth	List Price	w/TiN
STM6406	6	13/32	1	24	211.04	247.19
STM6406-1	6	13/32	1-1/4	24	211.04	247.19
STM6437	6	7/16	1	24	200.67	236.82
STM6437-1	6	7/16	1-1/4	24	200.67	236.82
STM6468	6	15/32	1	24	220.02	256.18
STM6468-1	6	15/32	1-1/4	24	220.02	256.18
STM6500	6	1/2	1	24	184.26	220.42
STM6500-1	6	1/2	1-1/4	24	166.45	202.61
STM6531-1	6	17/32	1-1/4	24	225.91	273.15
STM6562	6	9/16	1	24	240.78	288.03
STM6562-1	6	9/16	1-1/4	24	220.02	267.27
STM6625	6	5/8	1	24	246.80	294.05
STM6625-1	6	5/8	1-1/4	24	190.29	237.55
STM6687	6	11/16	1	24	203.33	250.58
STM6687-1	6	11/16	1-1/4	24	249.76	297.00
STM6750	6	3/4	1	24	273.45	320.70
STM6750-1	6	3/4	1-1/4	24	211.04	258.29
STM6812	6	13/16	1	24	285.37	342.89
STM6812-1	6	13/16	1-1/4	24	270.50	382.02
STM6875	6	7/8	1	24	294.34	351.86
STM6875-1	6	7/8	1-1/4	24	249.76	307.28
STM6937	6	15/16	1	24	332.90	390.42
STM6937-1	6	15/16	1-1/4	24	197.38	254.90
STM6100	6	1	1	24	270.50	328.02
STM6100-1	6	1	1-1/4	24	270.50	328.02
STM61125-1	6	1-1/8	1-1/4	24	353.81	422.42
STM61187-1	6	1-3/16	1-1/4	24	359.69	428.32
STM61250-1	6	1-1/4	1-1/4	24	364.18	432.80
STM7500-1	7	1/2	1-1/4	24	360.46	413.62
STM7562-1	7	9/16	1-1/4	24	376.59	433.47
STM7625-1	7	5/8	1-1/4	24	387.94	441.09
STM7750-1	7	3/4	1-1/4	24	430.94	522.22
STM7100-1	7	1	1-1/4	24	496.10	556.73
STM8250-1	8	1/4	1-1/4	28	319.58	358.72
STM8250-2	8	1/4	1-1/2	28	319.58	358.72
STM8312-1	8	5/16	1-1/4	28	353.81	402.07
STM8312-2	8	5/16	1-1/2	28	353.81	402.07
STM8375-1	8	3/8	1-1/4	28	365.75	405.03
STM8375-2	8	3/8	1-1/2	28	365.75	405.03
STM8500-1	8	1/2	1-1/4	28	368.66	426.57
STM8500-2	8	1/2	1-1/2	28	368.66	426.57
STM8625-1	8	5/8	1-1/4	28	398.40	474.34
STM8625-2	8	5/8	1-1/2	28	398.40	474.34
STM8750-1	8	3/4	1-1/4	28	428.12	504.07
STM8750-2	8	3/4	1-1/2	28	428.12	504.07
STM8100-1	8	1	1-1/4	28	483.09	576.56

Cobalt Side Milling Cutters

See page 32 for Cobalt Slitting Saws.

Straight Tooth

Catalog No.	Cutter Diam.	Width	Hole Size	No. of Teeth	List Price	w/TiN Coating
CSM3250	3	1/4	1	20	64.51	77.05
CSM3312	3	5/16	1	20	70.11	86.53
CSM3375	3	3/8	1	20	77.12	93.58
CSM3500	3	1/2	1	20	81.33	102.05
CSM4187	4	3/16	1	24	84.14	98.27
CSM4250	4	1/4	1	24	86.94	101.08
CSM4250-1	4	1/4	1-1/4	24	86.94	101.08
CSM4312	4	5/16	1	24	106.57	125.57
CSM4312-1	4	5/16	1-1/4	24	106.57	125.57
CSM4375	4	3/8	1	24	109.38	128.38
CSM4375-1	4	3/8	1-1/4	24	109.38	128.38
CSM4500	4	1/2	1	24	112.19	135.58
CSM4500-1	4	1/2	1-1/4	24	112.19	135.58
CSM4625-1	4	5/8	1-1/4	24	124.80	156.60
CSM4750	4	3/4	1	24	138.83	170.62
CSM4750-1	4	3/4	1-1/4	24	138.83	170.62
CSM6250-1	6	1/4	1-1/4	28	175.29	200.48
CSM6375-1	6	3/8	1-1/4	28	196.32	227.09
CSM6500-1	6	1/2	1-1/4	28	208.95	245.08

CORNER RADIUS-ALTERED WIDTH
ALL TOOLS IN THIS CATALOG
CAN BE ALTERED AND SHIPPED
IN LESS THAN 48 HOURS



Full Radius see page 21.

Staggered Tooth



Full Radius see page 21.

Catalog No.	Cutter Diam.	Width	Hole Size	No. of Teeth	List Price	w/TiN Coating
CSTM3187	3	3/16	1	18	72.92	85.46
CSTM3250	3	1/4	1	18	77.12	89.67
CSTM3312	3	5/16	1	18	86.94	103.40
CSTM3375	3	3/8	1	18	89.75	106.21
CSTM3375-1	3	3/8	1-1/4	18	89.75	106.21
CSTM3500	3	1/2	1	18	107.28	127.99
CSTM3500-1	3	1/2	1-1/4	18	107.28	127.99
CSTM4250	4	1/4	1	18	112.18	126.32
CSTM4250-1	4	1/4	1-1/4	18	112.18	126.32
CSTM4312	4	5/16	1	18	114.99	133.98
CSTM4312-1	4	5/16	1-1/4	18	114.99	133.98
CSTM4375-1	4	3/8	1-1/4	18	117.80	136.79
CSTM4500-1	4	1/2	1-1/4	18	133.22	156.62
CSTM4625-1	4	5/8	1-1/4	18	179.50	211.28
CSTM6250-1	6	1/4	1-1/4	24	227.18	252.36
CSTM6312-1	6	5/16	1-1/4	24	241.20	271.95
CSTM6375-1	6	3/8	1-1/4	24	204.74	235.49
CSTM6500-1	6	1/2	1-1/4	24	231.38	267.53
CSTM6750-1	6	3/4	1-1/4	24	300.09	347.34
CSTM6100-1	6	1	1-1/4	24	441.73	499.25

Shell End Mills

General Purpose - Right Hand and Left Hand Helix

General Purpose



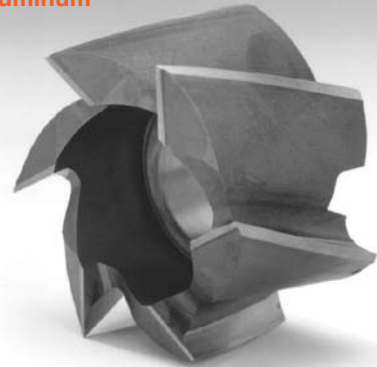
Right Hand Shown

Catalog No. Right Hand	List Price	w/TiN Coating	Diam.	Width	Hole Size	No. of Teeth	Catalog No. Left Hand	List Price	w/TiN Coating
SH1258R	58.75	74.36	1-1/4	1	1/2	8	SH1258L	63.24	78.85
SH158R	61.70	83.91	1-1/2	1-1/8	1/2	8	SH158L	66.18	88.39
SH1758R	76.98	114.71	1-3/4	1-1/4	3/4	8	SH1758L	82.89	120.61
SH210R	86.24	130.89	2	1-3/8	3/4	10	SH210L	92.12	136.77
SH22510R	95.08	149.61	2-1/4	1-1/2	1	10	SH22510L	102.51	157.04
SH2510R	113.73	176.33	2-1/2	1-5/8	1	10	SH2510L	122.70	185.31
SH27510R	141.21	203.83	2-3/4	1-5/8	1	10	SH27510L	148.65	211.25
SH312R	154.54	217.14	3	1-3/4	1-1/4	12	SH312L	169.40	232.01
SH3512R	215.54	286.66	3-1/2	1-7/8	1-1/4	12	SH3512L	230.40	301.53
SH414R	260.13	352.90	4	2-1/4	1-1/2	14	SH414L	275.00	367.77
SH4514R	334.45	427.24	4-1/2	2-1/4	1-1/2	14	SH4514L	349.32	442.10
SH516R	423.65	545.96	5	2-1/4	1-1/2	16	SH516L	445.94	568.26
SH616R	624.30	746.64	6	2-1/4	2	16	SH616L	654.04	776.36

Aluminum - Right Hand Helix Only

Catalog No.	Diam.	Width	Hole Size	No. of Teeth	List Price	w/TiN Coating
ASH1254	1-1/4	1	1/2	4	65.35	80.95
ASH1504	1-1/2	1-1/8	1/2	4	67.60	92.12
ASH204	2	1-3/8	3/4	4	92.12	136.77
ASH254	2-1/2	1-5/8	1	4	121.86	184.47
ASH306	3	1-3/4	1-1/4	6	170.93	233.55
ASH356	3-1/2	1-7/8	1-1/4	6	260.13	331.27
ASH406	4	2-1/4	1-1/2	6	275.00	336.77
ASH456	4-1/2	2-1/4	1-1/2	6	413.68	506.46
ASH508	5	2-1/4	1-1/2	8	460.80	583.12
ASH608	6	2-1/4	2	8	676.34	798.67

Aluminum



Cobalt - Right Hand Helix Only

Catalog No.	Diam.	Width	Hole Size	No. of Teeth	List Price	w/TiN Coating
CSH1258	1-1/4	1	1/2	8	82.03	97.90
CSH158	1-1/2	1-1/8	1/2	8	84.67	105.83
CSH1758	1-3/4	1-1/4	3/4	8	129.64	166.69
CSH210	2	1-3/8	3/4	10	129.71	174.36
CSH22510	2-1/4	1-1/2	1	10	138.91	193.15
CSH2510	2-1/2	1-5/8	1	10	169.33	231.51
CSH27510	2-3/4	1-5/8	1	10	203.73	264.59
CSH312	3	1-3/4	1-1/4	12	216.96	277.82
CSH3512	3-1/2	1-7/8	1-1/4	12	310.89	383.65
CSH414	4	2-1/4	1-1/2	14	383.65	476.26
CSH4514	4-1/2	2-1/4	1-1/2	14	*	*
CSH516	5	2-1/4	1-1/2	16	*	*
CSH616	6	2-1/4	2	16	*	*

Cobalt



*Price On Application

Carbide Tipped Side Milling Cutters

CORNER RADIUS-ALTERED WIDTH
ALL TOOLS IN THIS CATALOG
CAN BE ALTERED AND SHIPPED
IN LESS THAN 48 HOURS

For Cast Iron

Catalog No.	Diam.	Width	Hole Size	No. of Teeth	List Price	w/TiN Coating
CTSM3250-CI	3	1/4	1	6	114.40	126.94
CTSM3312-CI	3	5/6	1	6	114.40	130.86
CTSM3375-CI	3	3/8	1	6	120.24	136.70
CTSM3437-CI	3	7/16	1	6	130.40	151.11
CTSM3500-CI	3	1/2	1	6	131.86	152.57
CTSM4250-CI	4	1/4	1	8	149.45	163.58
CTSM4312-CI	4	5/16	1	8	154.82	173.82
CTSM4375-CI	4	3/8	1	8	161.21	180.21
CTSM4375-1-CI	4	3/8	1-1/4	8	168.78	187.78
CTSM4437-CI	4	7/16	1	8	171.55	194.95
CTSM4500-CI	4	1/2	1	8	171.55	194.95
CTSM4500-1-CI	4	1/2	1-1/4	8	171.55	194.95
CTSM4562-CI	4	9/16	1	8	181.28	213.07
CTSM4625-CI	4	5/8	1	8	191.02	222.80
CTSM4625-1-CI	4	5/8	1-1/4	8	191.02	222.80
CTSM4750-CI	4	3/4	1	8	191.96	223.74
CTSM4750-1-CI	4	3/4	1-1/4	8	191.96	223.74
CTSM5250-CI	5	1/4	1	10	204.39	229.59
CTSM5312-CI	5	5/16	1	10	204.39	235.15
CTSM5375-1-CI	5	3/8	1-1/4	10	209.34	240.09
CTSM5437-1-CI	5	7/16	1-1/4	10	212.24	248.38
CTSM5500-CI	5	1/2	1	10	217.33	253.48
CTSM5500-1-CI	5	1/2	1-1/4	10	217.33	253.48
CTSM5562-1-CI	5	9/16	1-1/4	10	227.21	274.46
CTSM5750-CI	5	3/4	1	10	256.19	303.43
CTSM5750-1-CI	5	3/4	1-1/4	10	256.19	303.43
CTSM5100-1-CI	5	1	1-1/4	10	282.02	339.54
CTSM6375-1-CI	6	3/8	1-1/4	12	259.06	289.82
CTSM6500-CI	6	1/2	1	12	266.76	302.90
CTSM6500-1-CI	6	1/2	1-1/4	12	266.76	302.90
CTSM6625-1-CI	6	5/8	1-1/4	12	291.15	338.40
CTSM6750-CI	6	3/4	1	12	305.28	352.52
CTSM6750-1-CI	6	3/4	1-1/4	12	305.28	352.52
CTSM6100-1-CI	6	1	1-1/4	12	319.82	377.34
CTSM8750-1-CI	8	3/4	1-1/4	12	348.89	424.83
CTSM8750-2-CI	8	3/4	1-1/2	12	348.89	424.83
CTSM8100-1-CI	8	1	1-1/4	12	369.25	462.73
CTSM8100-2-CI	8	1	1-1/2	12	369.25	462.73

For Non-Ferrous Material

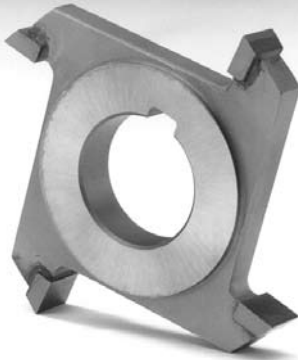
Catalog No.	Diam.	Width	Hole Size	No. of Teeth	List Price	w/TiN Coating
CTSM3250-NF	3	1/4	1	4	93.03	105.57
CTSM3312-NF	3	5/6	1	4	97.25	113.70
CTSM3375-NF	3	3/8	1	4	101.03	117.49
CTSM3437-NF	3	7/16	1	4	104.97	125.68
CTSM3500-NF	3	1/2	1	4	110.04	130.76
CTSM4250-NF	4	1/4	1	4	120.51	134.63
CTSM4312-NF	4	5/16	1	4	123.85	142.85
CTSM4375-NF	4	3/8	1	4	127.63	146.63
CTSM4375-1-NF	4	3/8	1-1/4	4	127.63	146.63
CTSM4437-NF	4	7/16	1	4	127.93	151.33
CTSM4500-NF	4	1/2	1	4	127.93	151.33
CTSM4537-1-NF	5	7/16	1-1/4	6	175.46	211.60
CTSM5500-NF	5	1/2	1	6	172.57	208.72
CTSM5500-1-NF	5	1/2	1-1/4	6	172.57	208.72
CTSM5562-1-NF	5	9/16	1-1/4	6	172.69	219.94
CTSM5750-NF	5	3/4	1	6	192.48	239.72
CTSM5750-1-NF	5	3/4	1-1/4	6	192.48	239.72
CTSM5100-1-NF	5	1	1-1/4	6	193.34	250.86
CTSM6375-NF	6	3/8	1	6	181.00	211.76
CTSM6500-NF	6	1/2	1	6	192.91	229.06
CTSM6500-1-NF	6	1/2	1-1/4	6	192.91	229.06
CTSM6625-1-NF	6	5/8	1-1/4	6	212.38	259.62
CTSM6750-NF	6	3/4	1	6	235.50	282.75
CTSM6750-1-NF	6	3/4	1-1/4	6	235.50	282.75
CTSM6100-1-NF	6	1	1-1/4	6	273.30	330.83
CTSM8750-1-NF	8	3/4	1-1/4	8	308.19	384.12
CTSM8750-2-NF	8	3/4	1-1/2	8	308.19	384.12
CTSM8100-1-NF	8	1	1-1/4	8	337.27	430.74
CTSM8100-2-NF	8	1	1-1/2	8	337.27	430.74

Carbide Tipped Side Milling Cutters

For Cast Iron



For Non-Ferrous Material



For Steel



For Steel

Catalog No.	Diam.	Width	Hole Size	No. of Teeth	List Price	w/TiN Coating
CTSM3250-S	3	1/4	1	6	134.85	147.39
CTSM3312-S	3	5/6	1	6	137.11	153.57
CTSM3375-S	3	3/8	1	6	138.66	155.11
CTSM3437-S	3	7/16	1	6	144.80	165.51
CTSM3500-S	3	1/2	1	6	148.55	169.27
CTSM4250-S	4	1/4	1	8	163.39	177.52
CTSM4312-S	4	5/16	1	8	173.86	192.86
CTSM4375-S	4	3/8	1	8	180.46	199.45
CTSM4375-1-S	4	3/8	1-1/4	8	183.66	202.66
CTSM4437-S	4	7/16	1	8	197.72	221.12
CTSM4500-S	4	1/2	1	8	203.22	226.63
CTSM4500-1-S	4	1/2	1-1/4	8	205.26	228.67
CTSM4562-S	4	9/16	1	8	205.26	237.06
CTSM4625-S	4	5/8	1	8	212.82	244.61
CTSM4625-1-S	4	5/8	1-1/4	8	212.82	244.61
CTSM4750-S	4	3/4	1	8	222.13	253.92
CTSM4750-1-S	4	3/4	1-1/4	8	222.13	253.92
CTSM5250-S	5	1/4	1	10	221.04	246.24
CTSM5312-S	5	5/16	1	10	221.04	251.80
CTSM5375-1-S	5	3/8	1-1/4	10	229.68	260.44
CTSM5437-1-S	5	7/16	1-1/4	10	238.41	274.55
CTSM5500-S	5	1/2	1	10	241.73	277.87
CTSM5500-1-S	5	1/2	1-1/4	10	241.73	277.87
CTSM5562-1-S	5	9/16	1-1/4	10	247.00	294.24
CTSM5750-S	5	3/4	1	10	264.59	311.83
CTSM5750-1-S	5	3/4	1-1/4	10	264.59	311.83
CTSM5100-1-S	5	1	1-1/4	10	282.02	339.54
CTSM6375-1-S	6	3/8	1-1/4	12	263.94	294.70
CTSM6500-S	6	1/2	1	12	265.37	301.51
CTSM6500-1-S	6	1/2	1-1/4	12	265.37	301.51
CTSM6625-1-S	6	5/8	1-1/4	12	275.56	322.81
CTSM6750-S	6	3/4	1	12	282.09	329.34
CTSM6750-1-S	6	3/4	1-1/4	12	282.09	329.34
CTSM6100-1-S	6	1	1-1/4	12	332.02	389.55
CTSM8750-1-S	8	3/4	1-1/4	12	345.99	421.92
CTSM8750-2-S	8	3/4	1-1/2	12	345.99	421.92
CTSM8100-1-S	8	1	1-1/4	12	275.06	468.53
CTSM8100-2-S	8	1	1-1/2	12	275.06	468.53

H.S.S. Combined Drills and Countersinks

H.S.S. Combined Drills and Countersinks

Catalog No.	Size	Body Diam.	Drill Diam.	Pkg. Qty.	List Price	w/TiN Coating
CDC-0	0	1/8	1/32	6	4.96	8.36
CDC-1	1	1/8	3/64	6	3.64	7.04
CDC-2	2	3/16	5/64	6	3.83	8.65
CDC-3	3	1/4	7/64	6	4.04	8.85
CDC-4	4	5/16	1/8	3	4.21	14.14
CDC-45	4-1/2	3/8	9/64	1	6.75	16.69
CDC-5	5	7/16	3/16	1	7.01	20.46
CDC-6	6	1/2	7/32	1	10.84	24.29
CDC-7	7	5/8	1/4	1	21.30	38.31
CDC-8	8	3/4	5/16	1	27.71	48.43
CDC-11	11	1/8	3/64	6	5.10	8.49
CDC-12	12	3/16	1/16	6	5.23	10.04
CDC-13	13	1/4	3/32	6	5.29	10.11
CDC-14	14	5/16	7/64	3	5.49	15.42
CDC-15	15	7/16	5/32	1	8.93	22.37
CDC-16	16	1/2	3/16	1	12.96	26.41
CDC-17	17	5/8	7/32	1	25.00	42.01
CDC-18	18	3/4	1/4	1	33.00	53.72



Corner Rounding End Mills

Corner Rounding End Mills

Mfg. with Std. Weldon Flats

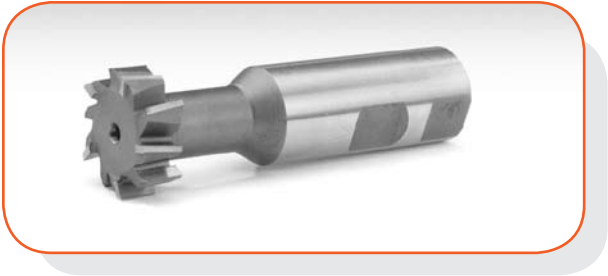


Catalog No.	Radius	Shank	Large Diam.	O.A.L.	List Price	w/TiN Coating
CR032	1/32	3/8	7/16	2-1/2	51.28	59.45
CR062	1/16	3/8	7/16	2-1/2	37.76	45.93
CR093	3/32	3/8	1/2	2-1/2	45.93	48.45
CR125	1/8	1/2	5/8	3	49.51	57.68
CR156	5/32	1/2	3/4	3	54.33	62.51
CR187	3/16	1/2	7/8	2-15/16	79.21	93.16
CR187-1	3/16	3/4	7/8	3-1/8	80.35	94.32
CR250	1/4	1/2	1	3	68.46	84.62
CR250-1	1/4	3/4	1	3-1/4	68.46	88.32
CR312	5/16	3/4	1-1/8	3-1/4	83.98	109.51
CR312-1	5/16	7/8	1-1/8	3-1/2	83.98	109.51
CR375	3/8	3/4	1-1/4	3-1/2	95.47	121.00
CR375-1	3/8	7/8	1-1/4	3-3/4	95.47	121.00
CR437	7/16	3/4	1-3/8	3-3/4	124.38	155.40
CR437-1	7/16	1	1-3/8	4	124.38	155.40
CR500	1/2	3/4	1-1/2	3-7/8	131.47	162.50
CR500-1	1/2	1	1-1/2	4-1/8	131.47	162.50
CR625	5/8	3/4	1-15/16	4	135.35	178.31
CR625-1	5/8	1	1-15/16	4-1/4	135.35	185.73
CR750	3/4	5/8	2-1/4	4-1/8	155.73	198.68
CR750-1	3/4	3/4	2-1/4	4-1/8	155.73	204.92
CR750-2	3/4	1	2-1/4	4-5/16	155.73	213.31

T-Slot Cutters – H.S.S. and Cobalt

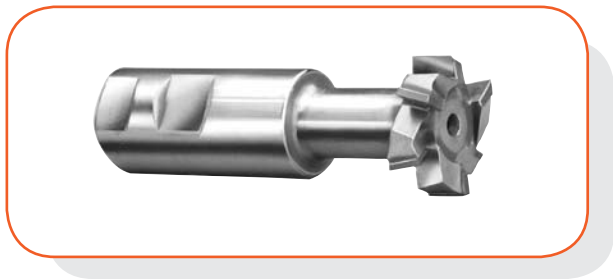
Staggered Tooth

Straight Shank - High Speed Steel. Right Hand cut standard with staggered teeth. Excellent chip clearance.



H.S.S.	List Price	w/TiN Coating	Bolt Size	Cutter Diam.	Cutter Width	Neck Diam.	Shank Diam.	O.A.L.	No. of Teeth	Cobalt	List Price	w/TiN Coating
TS50	49.78	59.51	1/4	9/16	15/64	17/64	1/2	2-19/32	8	CTS50	65.70	74.79
TS75	53.57	64.29	5/16	21/32	17/64	21/64	1/2	2-11/16	8	CTS75	70.31	80.34
TS100	78.81	96.02	3/8	25/32	21/64	13/32	3/4	3-1/4	8	CTS100	100.61	116.70
TS125	89.20	107.08	1/2	31/32	25/64	17/32	3/4	3-7/16	8	CTS125	114.57	133.12
TS150	121.58	146.22	5/8	1-1/4	31/64	21/32	1	3-15/16	10	CTS150	155.12	178.15
TS175	142.33	175.19	3/4	1-15/32	5/8	25/32	1	4-7/16	10	CTS175	188.33	214.03
TS200	228.85	272.67	1	1-27/32	53/64	1-1/32	1-1/4	4-13/16	10	CTS200	267.34	308.30
TS225	304.72	348.53	1-1/4	2-7/32	1-3/32	1-7/32	1-1/4	5-3/8	10	CTS225	355.98	396.92
TS250	393.90	448.64	1-1/2	2-21/32	1-11/32	1-7/32	1-1/4	5-29/32	12	CTS250	460.16	511.32

T-Slot Cutters – Carbide Tipped

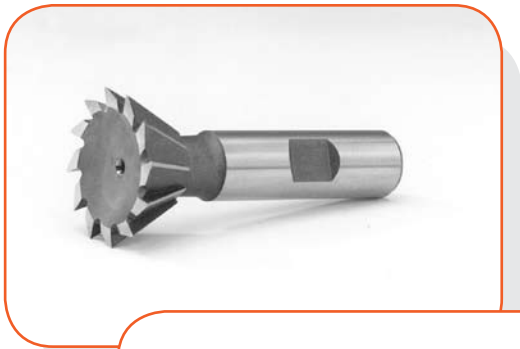


General Purpose	Steel	Bolt Size	Cutter Diam.	Cutter Width	Neck Diam.	Shank Diam.	O.A.L.	List Price
CTTS50-GP	CTTS50-S	1/4	9/16	15/64	17/64	1/2	2-19/32	96.53
CTTS75-GP	CTTS75-S	5/16	21/32	17/64	21/64	1/2	2-11/16	99.74
CTTS100-GP	CTTS100-S	3/8	25/32	21/64	13/32	3/4	3-1/4	125.57
CTTS125-GP	CTTS125-S	1/2	31/32	25/64	17/32	3/4	3-7/16	137.68
CTTS150-GP	CTTS150-S	5/8	1-1/4	31/64	21/32	1	3-15/16	181.94
CTTS175-GP	CTTS175-S	3/4	1-15/32	5/8	25/32	1	4-7/16	201.72
CTTS200-GP	CTTS200-S	1	1-27/32	53/64	1-1/32	1-1/4	4-13/16	274.51
CTTS225-GP	CTTS225-S	1-1/4	2-7/32	1-3/32	1-9/32	1-1/4	5-3/8	354.52
CTTS250-GP	CTTS250-S	1-1/2	2-21/32	1-11/32	1-7/32	1-1/4	5-29/32	426.65

Dovetail Cutters

H.S.S. / Cobalt

H.S.S.	List Price	w/TiN Coating	Diam.	Width	Angle	O.A.L.	Shank	No. of Teeth	Cobalt	List Price	w/TiN Coating
DT3758-45	38.57	47.50	3/8	1/8	45°	2-1/16	3/8	8	CDT3758-45	48.18	57.27
DT5008-45	41.72	50.65	1/2	1/8	45°	2-1/8	3/8	8	CDT5008-45	51.30	61.32
DT7508-45	47.34	56.27	3/4	7/32	45°	2-5/32	3/8	8	CDT7508-45	58.20	76.76
DT137510-45	75.73	86.44	1-3/8	3/8	45°	2-17/32	1/2	10	CDT137510-45	94.42	117.46
DT137512-45	75.73	86.44	1-3/8	3/8	45°	2-13/16	5/8	10	CDT137512-45	94.42	117.46
DT187512-45	165.48	176.19	1-7/8	1/2	45°	2-15/16	7/8	12	CDT187512-45	203.47	244.43
DT225012-45	196.32	215.57	2-1/4	11/16	45°	3-9/16	1	12	CDT225012-45	231.82	272.75
DT250012-45	232.78	252.04	2-1/2	3/4	45°	3-3/4	1	12	CDT250012-45	273.18	325.11
DT3758-60	38.57	47.50	3/8	3/16	60°	2-1/8	3/8	8	CDT3758-60	48.18	57.27
DT5008-60	41.72	50.65	1/2	7/32	60°	2-1/8	3/8	8	CDT5008-60	51.30	61.32
DT7508-60	47.34	56.27	3/4	5/16	60°	2-1/8	3/8	8	CDT7508-60	58.20	76.76
DT137512-60	75.73	86.44	1-3/8	9/16	60°	3	5/8	12	CDT137512-60	94.42	117.46
DT187512-60	165.48	176.19	1-7/8	13/16	60°	3-1/4	7/8	12	CDT187512-60	203.47	244.43
DT225012-60	196.32	215.57	2-1/4	1-1/16	60°	3-3/4	1	12	CDT225012-60	231.82	272.75
DT250012-60	232.78	252.03	2-1/2	1-1/8	60°	3-3/4	1	12	CDT250012-60	273.18	325.11

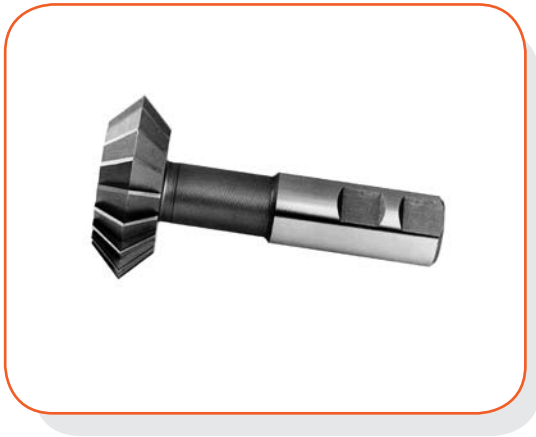


Carbide Tipped*

General Purpose	Steel	Diam.	Width	Shank	O.A.L.	List Price
CTDT500-45-GP	CTDT500-45-S	1/2	5/32	3/8	2-1/8	88.29
CTDT750-45-GP	CTDT750-45-S	3/4	1/4	3/8	2-1/4	93.84
CTDT1000-45-GP	CTDT1000-45-S	1	5/16	1/2	2-1/2	100.48
CTDT1250-45-GP	CTDT1250-45-S	1-1/4	3/8	5/8	2-3/4	115.39
CTDT1500-45-GP	CTDT1500-45-S	1-1/2	1/2	3/4	3-1/4	127.34
CTDT2000-45-GP	CTDT2000-45-S	2	5/8	1	4-1/4	177.69
CTDT2500-45-GP	CTDT2500-45-S	2-1/2	3/4	1-1/4	4-3/8	243.44
CTDT3000-45-GP	CTDT3000-45-S	3	1	1-1/4	4-1/2	291.66
CTDT500-60-GP	CTDT500-60-S	1/2	7/32	3/8	2-1/8	88.29
CTDT750-60-GP	CTDT750-60-S	3/4	1/4	3/8	2-1/4	93.84
CTDT1000-60-GP	CTDT1000-60-S	1	3/8	1/2	2-1/2	100.48
CTDT1250-60-GP	CTDT1250-60-S	1-1/4	1/2	5/8	2-3/4	115.39
CTDT1500-60-GP	CTDT1500-60-S	1-1/2	5/8	3/4	3-1/4	127.34
CTDT2000-60-GP	CTDT2000-60-S	2	3/4	1	4-1/4	177.69
CTDT2500-60-GP	CTDT2500-60-S	2-1/2	7/8	1-1/4	4-3/8	243.44
CTDT3000-60-GP	CTDT3000-60-S	3	1-1/8	1-1/4	4-1/2	291.66

* Carbide tipped dovetails have a .015/020 radius on corner – actual diameter is slightly smaller than the nominal listed diameter.

Double Angle Cutters



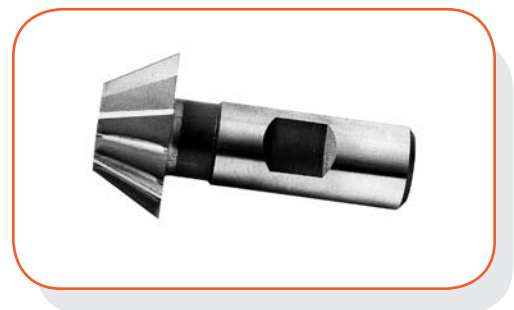
Double Angle Cutters

Catalog No.	Cut Diam.	Width	Shank	O.A.L.	List Price	w/TiN Coating
<i>60 Degree Included Angle</i>						
SDA750-60	3/4	3/16	3/8	2-3/8	27.27	37.23
SDA100-60	1	5/16	1/2	2-27/32	44.82	58.46
SDA1375-60	1-3/8	7/16	5/8	3-7/32	59.76	80.38
SDA1500-60	1-1/2	1/2	5/8	3-3/8	78.44	123.12
SDA1875-60	1-7/8	5/8	3/4	3-25/32	90.88	136.62
SDA2250-60	2-1/4	3/4	7/8	4-5/32	132.38	182.49
<i>90 Degree Included Angle</i>						
SDA750-90	3/4	1/4	3/8	2-7/16	27.27	37.23
SDA100-90	1	3/8	1/2	2-29/32	44.82	58.46
SDA1375-90	1-3/8	1/2	5/8	3-9/32	59.76	80.38
SDA1500-90	1-1/2	9/16	5/8	3-7/16	78.44	123.12
SDA1875-90	1-7/8	5/8	3/4	3-25/32	90.88	136.62
SDA2250-90	2-1/4	3/4	7/8	4-5/32	132.38	182.49

Chamfer Tools

Chamfer Tools

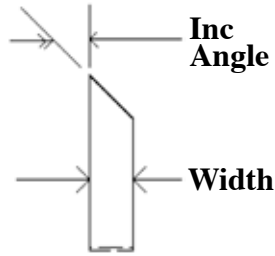
Catalog No.	Diam.	Width	Shank	O.A.L.	List Price	w/TiN Coating
<i>45 Degree Included Angle</i>						
SAC500-45	1/2	1/8	3/8	2-1/8	29.00	37.34
SAC750-45	3/4	3/16	3/8	2-1/8	33.61	45.48
SAC1000-45	1	5/16	1/2	2-1/2	41.84	63.85
SAC1500-45	1-1/2	1/2	3/4	2-3/4	60.12	87.24
<i>60 Degree Included Angle</i>						
SAC500-60	1/2	7/32	3/8	2-1/8	29.00	37.34
SAC750-60	3/4	5/16	3/8	2-1/8	33.61	45.48
SAC1000-60	1	7/16	1/2	2-1/2	41.84	63.85
SAC1500-60	1-1/2	5/8	3/4	2-3/4	60.12	87.24



Angle Milling Cutters

Single Angle

Single Angle Cutters come in 45 and 60 Degree Included Angles. All cutters have 20 teeth.

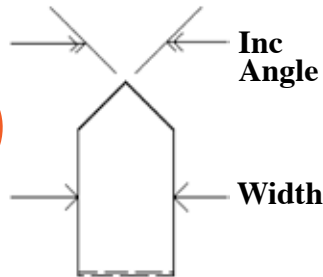


Catalog No. Right Hand	Catalog No. Left Hand	Diam.	Width	Hole Size	Inc. Angle	List Price	w/TiN Coating
SA27500-R-45	SA27500-L-45	2-3/4	1/2	1	45	69.14	89.86
SA3500-R-45	SA3500-L-45	3	1/2	1-1/4	45	81.76	102.47
SA4500-R-45	SA4500-L-45	4	1/2	1-1/4	45	151.60	174.98
SA4750-R-45	SA4750-L-45	4	3/4	1-1/4	45	163.51	195.30
SA4100-R-45	SA4100-L-45	4	1	1-1/4	45	199.13	239.91
SA27500-R-60	SA27500-L-60	2-3/4	1/2	1	60	69.14	89.86
SA-3500-R-60	SA3500-L-60	3	1/2	1-1/4	60	81.61	102.47
SA4500-R-60	SA4500-L-60	4	1/2	1-1/4	60	151.60	174.98
SA4750-R-60	SA4750-L-60	4	3/4	1-1/4	60	163.51	195.30
SA4100-R-60	SA4100-L-60	4	1	1-1/4	60	199.13	239.91



Right Hand Shown

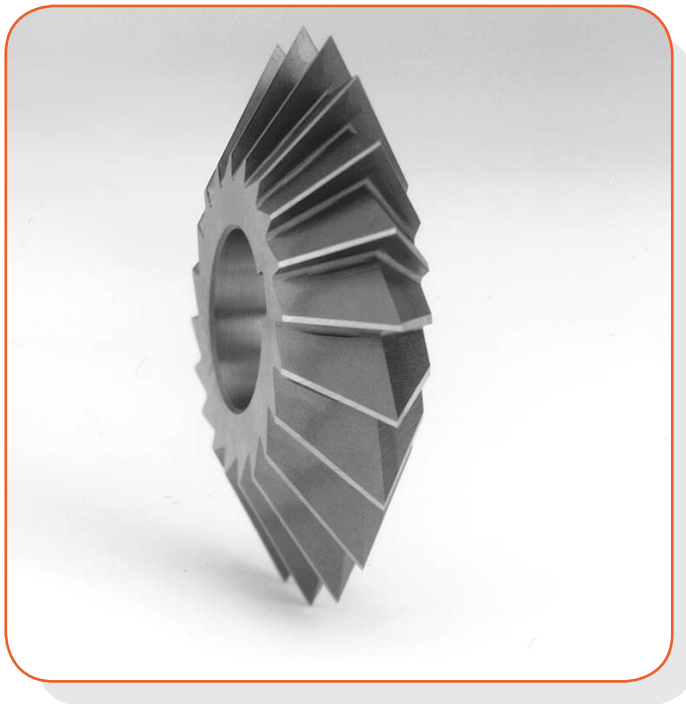
**CORNER RADIUS-ALTERED WIDTH
ALL TOOLS IN THIS CATALOG
CAN BE ALTERED AND SHIPPED
IN LESS THAN 48 HOURS**



Double Angle

Double Angle Cutters come in 45, 60, and 90 Degree Included Angles. All cutters have 20 teeth.

Catalog No.	Diam.	Width	Hole Size	Inc Angle	List Price	w/TiN Coating
DA27500-45	2-3/4	1/2	1	45	68.44	89.15
DA3500-45	3	1/2	1	45	67.31	88.03
DA4500-45	4	1/2	1-1/4	45	154.26	177.66
DA4750-45	4	3/4	1-1/4	45	171.78	203.57
DA27500-60	2-3/4	1/2	1	60	68.44	89.15
DA3500-60	3	1/2	1	60	67.31	88.03
DA4500-60	4	1/2	1-1/4	60	151.60	174.98
DA4750-60	4	3/4	1-1/4	60	163.51	195.30
DA4100-60	4	1	1-1/4	60	202.21	243.00
DA5750-60	5	3/4	1-1/4	60	262.20	285.09
DA5100-60	5	1	1-1/4	60	317.82	338.00
DA6100-60	6	1	1-1/4	60	396.36	431.33
DA61250-60	6	1-1/4	1-1/4	60	508.66	539.74
DA61500-60	6	1-1/2	1-1/4	60	538.56	566.68
DA27500-90	2 3/4	1/2	1	90	68.44	89.15
DA3500-90	3	1/2	1	90	67.31	88.03
DA4500-90	4	1/2	1-1/4	90	151.60	174.98
DA4750-90	4	3/4	1-1/4	90	163.51	195.30
DA4100-90	4	1	1-1/4	90	202.21	243.00
DA5750-90	5	3/4	1-1/4	90	262.20	285.08
DA5100-90	5	1	1-1/4	90	338.00	338.00
DA6100-90	6	1	1-1/4	90	396.36	431.33
DA61250-90	6	1-1/4	1-1/4	90	508.66	539.74
DA61500-90	6	1-1/2	1-1/4	90	538.56	566.68



Full Radius Side Milling Cutters

Cobalt Part #	Cobalt List	Diam.	Width	I.D.	H.S.S. PART #	H.S.S. List
BCSM3250	117.46	3	1/4	1	BSM3250	101.38
BCSM3250-1	117.46	3	1/4	1 1/4	BSM3250-1	101.38
BCSM3375	129.82	3	3/8	1	BSM3375	113.75
BCSM3375-1	129.82	3	3/8	1 1/4	BSM3375-1	113.75
BCSM3500	136.00	3	1/2	1	BSM3500	117.46
BCSM3500-1	136.00	3	1/2	1 1/4	BSM3500-1	117.46
BCSM4250	142.18	4	1/4	1	BSM4250	121.17
BCSM4250-1	142.18	4	1/4	1 1/4	BSM4250-1	121.17
BCSM4375	160.73	4	3/8	1	BSM4375	136.00
BCSM4375-1	160.73	4	3/8	1 1/4	BSM4375-1	136.00
BCSM4500	166.91	4	1/2	1	BSM4500	142.18
BCSM4500-1	166.91	4	1/2	1 1/4	BSM4500-1	142.18
BCSM4500-1	241.10	6	1/4	1 1/4	BSM4500-1	173.09
BCSM6375-1	253.45	6	3/8	1 1/4	BSM6375-1	197.82
BCSM6500-1	265.82	6	1/2	1 1/4	BSM6500-1	207.72

Straight Tooth



Staggered Tooth



Cobalt Part #	Cobalt List	Diam.	Width	I.D.	H.S.S. PART #	H.S.S. List
BCSTM3250	142.18	3	1/4	1	BSTM3250	121.17
BCSTM3250-1	142.18	3	1/4	1 1/4	BSTM3250-1	121.17
BCSTM3375	154.55	3	3/8	1	BSTM3375	136.00
BCSTM3375-1	154.55	3	3/8	1 1/4	BSTM3375-1	136.00
BCSTM3500	179.28	3	1/2	1	BSTM3500	142.18
BCSTM3500-1	179.28	3	1/2	1 1/4	BSTM3500-1	142.18
BCSTM4250	182.98	4	1/4	1	BSTM4250	148.37
BCSTM4250-1	182.98	4	1/4s	1 1/4	BSTM4250-1	148.37
BCSTM4375-1	187.93	4	3/8	1 1/4	BSTM4375-1	153.32
BCSTM4500-1	204.00	4	1/2	1 1/4	BSTM4500-1	166.91
BCSTM6250-1	284.36	6	1/4	1 1/4	BSTM4500-1	234.91
BCSTM6375-1	290.55	6	3/8	1 1/4	BSTM6375-1	241.10
BCSTM6500-1	309.10	6	1/2	1 1/4	BSTM6500-1	259.64

Full Radius Slitting Saws

Straight T. Slitting Saw

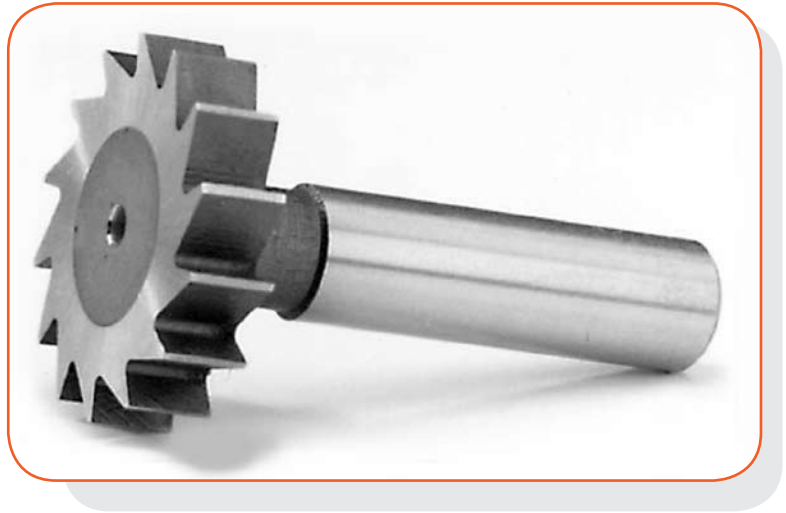


Part #	Diam. x Width	I.D.	Price
BSS25125	2 1/2 x 1/8	7/8	103.69
BSS362	3 x 1/16	1	117.46
BSS393	3 x 3/32	1	117.46
BSS3125	3 x 1/8	1	117.46
BSS3156	3 x 5/32	1	117.46
BSS3187	3 x 3/16	1	142.18
BSS3250	3 x 1/4	1	150.84
BSS462	4 x 1/16	1	139.72
BSS462-1	4 x 1/16	1 1/4	153.32
BSS493	4 x 3/32	1	148.37
BSS493-1	4 x 3/32	1 1/4	166.91
BSS4125	4 x 1/8	1	148.37
BSS4215-1	4 x 1/8	1 1/4	166.91

Part #	Diam. x Width	I.D.	Price
BSS4156	4 x 5/32	1	148.37
BSS4156-1	4 x 5/32	1 - 1/4	166.91
BSS4187	4 x 3/16	1	148.37
BSS4187-1	4 x 3/16	1 - 1/4	166.91
BSS4250	4 x 1/4	1	179.27
BSS4250-1	4 x 1/4	1 - 1/4	179.27
BSS6125	6 x 1/8	1	204.01
BSS6125-1	6 x 1/8	1 1/4	204.01
BSS6156	6 x 5/32	1	259.64
BSS6156-1	6 x 5/32	1 1/4	259.64
BSS6187	6 x 3/16	1	265.83
BSS6187-1	6 x 3/16	1 1/4	265.83
BSS6250	6 x 1/4	1	272.01
BSS6250-1	6 x 1/4	1 - 1/4	272.01

Large Diameter Keyseat Cutters

Catalog No.	Diam. x Width	Shank	Price
LDKY16-18	1-5/8 x 1/8	1/2	126.46
LDKY16-316	1-5/8 x 3/16	1/2	126.46
LDKY16-14	1-5/8 x 1/4	1/2	126.46
LDKY16-516	1-5/8 x 5/16	1/2	126.46
LDKY16-38	1-5/8 x 3/8	1/2	126.46
LDKY16-12	1-5/8 x 1/2	1/2	126.46
LDKY17-18	1-3/4 x 1/8	1/2	139.80
LDKY17-316	1-3/4 x 3/16	1/2	139.80
LDKY17-14	1-3/4 x 1/4	1/2	139.80
LDKY17-516	1-3/4 x 5/16	1/2	139.80
LDKY17-38	1-3/4 x 3/8	1/2	139.80
LDKY17-12	1-3/4 x 1/2	1/2	139.80
LDKY18-18	1-7/8 x 1/8	1/2	142.88
LDKY18-316	1-7/8 x 3/16	1/2	142.88
LDKY18-14	1-7/8 x 1/4	1/2	142.88
LDKY18-516	1-7/8 x 5/16	1/2	142.88
LDKY18-38	1-7/8 x 3/8	1/2	142.88
LDKY18-12	1-7/8 x 1/2	1/2	142.88
LDKY2-18	2 x 1/8	1/2	150.17
LDKY2-316	2 x 3/16	1/2	150.17
LDKY2-14	2 x 3/4	1/2	150.17
LDKY2-516	2 x 5/16	1/2	150.17
LDKY2-38	2 x 3/8	1/2	150.17
LDKY2-12	2 x 1/2	1/2	150.17

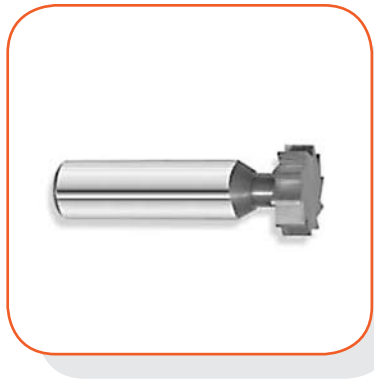


Mfg. with Std. Weldon Flats

Made from high speed steel – straight tooth.
One piece construction. Specials quoted on request.
See page 33 for specials.

Solid Carbide Keyseat Cutters

Straight Tooth -Right Hand Cut



**CORNER RADIUS-ALTERED WIDTH
ALL TOOLS IN THIS CATALOG
CAN BE ALTERED AND SHIPPED
IN LESS THAN 48 HOURS**

Catalog No.	Amer. Std.	Diam. x Width	Price
SC202	203	1/4 x 1/16	137.04
SC203	202	3/8 x 1/16	137.04
SC303	303	3/8 x 3/32	84.24
SC403	403	3/8 x 1/8	84.24
SC204	204	1/2 x 1/16	88.71
SC304	304	1/2 x 3/32	88.71
SC404	404	1/2 x 1/8	88.71
SC305	305	5/8 x 3/32	92.35
SC405	405	5/8 x 1/8	94.49
SC505	505	5/8 x 5/32	96.43
SC605	605	5/8 x 3/16	98.16
SC406	406	3/4 x 1/8	119.69
SC506	506	3/4 x 5/32	122.14
SC606	606	3/4 x 3/16	125.71
SC706	706	3/4 x 7/32	126.94
SC807	806	3/4 x 1/4	127.76
SC507	507	7/8 x 5/32	139.59
SC607	607	7/8 x 3/16	142.24
SC707	707	7/8 x 7/32	144.08

Catalog No.	Amer. Std.	Diam. x Width	Price
SC807	807	7/8 x 1/4	145.92
SC608	608	1 x 3/16	157.96
SC708	708	1 x 7/32	161.63
SC808	808	1 x 1/4	163.16
SC1008	1008	1 x 5/16	182.42
SC1208	1208	1 x 3/8	182.42
SC609	609	1-1/8 x 3/16	182.42
SC709	709	1-1/8 x 7/32	182.42
SC809	809	1-1/8 x 1/4	182.42
SC1009	1009	1-1/8 x 5/16	199.08
SC610	610	1-1/4 x 3/16	186.53
SC710	710	1-1/4 x 7/32	191.33
SC810	810	1-1/4 x 1/4	194.39
SC1010	1010	1-1/4 x 5/16	214.35
SC1210	1210	1-1/4 x 3/8	214.35
SC812	812	1-1/2 x 1/4	214.35
SC1012	1012	1-1/2 x 5/16	234.65
SC1212	1212	1-1/2 x 3/8	234.65

TiN coating Price On Application

Woodruff Keyseat Cutters – H.S.S. and Cobalt



Straight Tooth



Staggered Tooth

• Strong, one-piece construction on all keyseat cutters •

Sizes 1/2" shank, rh cut			Straight Tooth High Speed Steel			Staggered Tooth High Speed Steel			Straight Tooth Cobalt			Staggered Tooth Cobalt		
Amer. Std.	Diam.	Width	Part No.	List Price	w/TiN Coating	Part No.	List Price	w/TiN Coating	Part No.	List Price	w/TiN Coating	Part No.	List Price	w/TiN Coating
202	1/4	1/16	KY200	14.75	26.36	STKY200	18.93	30.53	CKY200	20.63	32.23	CSTKY200	27.44	39.04
202-1/2	5/16	1/16	KY225	14.75	26.36	STKY225	18.93	30.53	CKY225	20.63	32.23	CSTKY225	27.44	39.04
302-1/2	5/16	3/32	KY250	14.75	26.36	STKY250	18.93	30.53	CKY250	20.63	32.23	CSTKY250	27.44	39.04
203	3/8	1/16	KY275	14.75	26.36	STKY275	18.93	30.53	CKY275	20.63	32.23	CSTKY275	27.44	39.04
303	3/8	3/32	KY300	14.75	26.36	STKY300	18.93	30.53	CKY300	20.63	32.23	CSTKY300	27.44	39.04
403	3/8	1/8	KY325	14.75	26.36	STKY325	18.93	30.53	CKY325	20.63	32.23	CSTKY325	27.44	39.04
204	1/2	1/16	KY350	14.75	26.36	STKY350	16.69	28.29	CKY350	20.63	32.23	CSTKY350	24.33	35.93
304	1/2	3/32	KY375	14.75	26.36	STKY375	16.69	28.29	CKY375	20.63	32.23	CSTKY375	24.33	36.01
305	5/8	3/32	KY400	14.75	26.36	STKY400	16.83	28.44	CKY400	20.63	32.23	CSTKY400	24.41	33.34
404	1/2	1/8	KY425	14.75	26.36	STKY425	16.69	28.29	CKY425	20.63	32.23	CSTKY425	24.33	35.93
405	5/8	1/8	KY450	14.75	26.36	STKY450	16.83	28.44	CKY450	20.63	32.23	CSTKY450	23.95	37.48
406	3/4	1/8	KY475	15.64	27.54	STKY475	19.63	31.53	CKY475	21.58	33.48	CSTKY475	28.58	40.48
505	5/8	5/32	KY500	14.75	26.36	STKY500	16.83	28.44	CKY500	21.58	33.19	CSTKY500	24.41	36.01
605	5/8	3/16	KY525	14.75	26.36	STKY525	16.83	28.44	CKY525	21.58	33.19	CSTKY525	24.41	36.01
506	3/4	5/32	KY575	15.64	27.54	STKY575	19.63	31.53	CKY575	21.58	35.55	CSTKY575	28.58	40.48
806	3/4	1/4	KY600	15.64	27.54	STKY600	19.63	31.53	CKY600	23.65	35.55	CSTKY600	28.58	40.48
507	7/8	5/32	KY625	17.04	28.93	STKY625	21.52	33.42	CKY625	23.65	35.55	CSTKY625	31.32	43.14
606	3/4	3/16	KY650	15.64	27.54	STKY650	19.63	31.53	CKY650	23.65	35.55	CSTKY650	28.58	40.48
607	7/8	3/16	KY675	17.04	28.93	STKY675	21.52	33.42	CKY675	23.65	35.55	CSTKY675	31.32	43.14
707	7/8	7/32	KY700	17.53	29.43	STKY700	21.52	33.42	CKY700	23.65	35.55	CSTKY700	31.32	43.14
608	1	3/16	KY725	18.93	30.82	STKY725	24.19	36.09	CKY725	25.93	37.82	CSTKY725	35.01	46.92
708	1	7/32	KY750	18.93	30.82	STKY750	24.19	36.09	CKY750	25.93	37.82	CSTKY750	35.01	46.92
1208	1	3/8	KY775	18.93	31.24	STKY775	24.54	36.44	CKY775	26.88	38.77	CSTKY775	35.69	47.58
609	1-1/8	3/16	KY800	20.97	32.86	STKY800	27.90	39.80	CKY800	29.16	41.05	CSTKY800	40.51	52.40
807	7/8	1/4	KY825	17.53	29.43	STKY825	21.52	33.42	CKY825	23.65	35.55	CSTKY825	31.32	43.14
808	1	1/4	KY850	18.93	30.82	STKY850	24.19	36.09	CKY850	25.93	37.82	CSTKY850	35.01	46.92
709	1-1/8	7/32	KY875	20.97	33.57	STKY875	27.90	39.80	CKY875	29.16	41.74	CSTKY875	40.51	53.10
809	1-1/8	1/4	KY900	21.59	34.18	STKY900	27.90	39.80	CKY900	29.16	41.74	CSTKY900	40.51	53.10
610	1-1/4	3/16	KY925	23.41	36.02	STKY925	29.11	41.70	CKY925	32.56	45.15	CSTKY925	42.12	54.71
710	1-1/4	7/32	KY950	23.41	36.02	STKY950	26.33	41.70	CKY950	32.56	45.15	CSTKY950	42.12	54.71
810	1-1/4	1/4	KY975	24.19	36.80	STKY975	30.57	43.17	CKY975	32.56	45.15	CSTKY975	44.47	57.07
811	1-3/8	1/4	KY1000	27.35	40.24	STKY1000	34.07	46.96	CKY1000	37.66	50.55	CSTKY1000	49.51	62.39
812	1-1/2	1/4	KY1025	28.05	40.93	STKY1025	36.46	49.35	CKY1025	39.00	51.88	CSTKY1025	53.01	65.89
1008	1	5/16	KY1050	19.35	30.90	STKY1050	24.54	36.15	CKY1050	26.88	38.43	CSTKY1050	35.69	46.71
1009	1-1/8	5/16	KY1075	22.43	35.04	STKY1075	28.75	41.35	CKY1075	31.05	43.64	CSTKY1075	41.28	53.86
1010	1-1/4	5/16	KY1080	25.17	37.77	STKY1080	31.55	44.15	CKY1080	34.83	47.42	CSTKY1080	45.62	58.20
1011	1-3/8	5/16	KY1100	27.35	40.24	STKY1100	34.07	46.96	CKY1100	37.66	50.55	CSTKY1100	49.51	62.39
1012	1-1/2	5/16	KY1125	29.03	41.93	STKY1125	36.46	49.35	CKY1125	40.13	53.03	CSTKY1125	53.01	65.89
1210	1-1/4	3/8	KY1150	25.17	38.06	STKY1150	31.55	44.44	CKY1150	34.83	47.71	CSTKY1150	45.62	58.49
1211	1-3/8	3/8	KY1175	27.70	40.59	STKY1175	34.71	47.60	CKY1175	37.66	50.55	CSTKY1175	50.17	63.04
1212	1-1/2	3/8	KY1200	30.15	43.04	STKY1200	38.57	51.45	CKY1200	40.13	53.03	CSTKY1200	55.84	68.72

For narrow width sizes, see page 25.

For carbide tipped, see page 24.

Woodruff Keyseat Cutters – Carbide Tipped

Straight Tooth



Staggered Tooth



Keyseat Cutters - Carbide Tipped

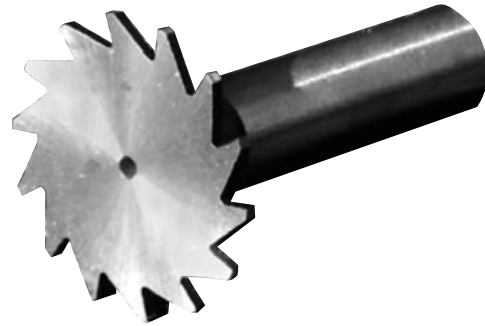
1/2" shanks – Right Hand cut; chip breakers on all tools 5/32" wide and greater.

Amer. Std.	Diam.	Width	Straight	List Price	Staggered	List Price
204	1/2	1/16	TC204	74.17	STC204	87.25
304	1/2	3/32	TC304	74.17	STC304	87.25
404	1/2	1/8	TC404	74.17	STC404	87.25
305	5/8	3/32	TC305	76.80	STC305	90.37
405	5/8	1/8	TC405	76.80	STC405	90.37
505	5/8	5/32	TC505	76.80	STC505	90.37
605	5/8	3/16	TC605	76.80	STC605	90.37
406	3/4	1/8	TC406	80.18	STC406	96.41
506	3/4	5/32	TC506	80.18	STC506	96.41
606	3/4	3/16	TC606	80.18	STC606	96.41
806	3/4	1/4	TC806	80.18	STC806	96.41
507	7/8	5/32	TC507	83.97	STC507	98.71
607	7/8	3/16	TC607	83.97	STC607	98.71
707	7/8	7/32	TC707	83.97	STC707	98.71
807	7/8	1/4	TC807	83.97	STC807	98.71
608	1	3/16	TC608	94.70	STC608	111.41
708	1	7/32	TC708	94.70	STC708	111.41
808	1	1/4	TC808	94.70	STC808	111.41
1008	1	5/16	TC1008	94.70	STC1008	111.41
1208	1	3/8	TC1208	94.70	STC1208	111.41
609	1-1/8	3/16	TC609	99.50	STC609	116.94
709	1-1/8	7/32	TC709	99.50	STC709	116.94
809	1-1/8	1/4	TC809	99.50	STC809	116.94
1009	1-1/8	5/16	TC1009	99.50	STC1009	116.94
610	1-1/4	3/16	TC610	104.47	STC610	122.82
710	1-1/4	7/32	TC710	104.47	STC710	122.82
810	1-1/4	1/4	TC810	104.47	STC810	122.82
1010	1-1/4	5/16	TC1010	104.47	STC1010	122.82
1210	1-1/4	3/8	TC1210	104.47	STC1210	122.82
811	1-3/8	1/4	TC811	109.74	STC811	135.50
1011	1-3/8	5/16	TC1011	109.74	STC1011	135.50
1211	1-3/8	3/8	TC1211	109.74	STC1211	135.50
812	1-1/2	1/4	TC812	115.24	STC812	135.50
1012	1-1/2	5/16	TC1012	115.24	STC1012	135.50
1212	1-1/2	3/8	TC1212	115.24	STC1212	135.50

TiN coating Price On Application

Woodruff Keyseat Cutters – Narrow Width

**CORNER RADIUS-ALTERED WIDTH
ALL TOOLS IN THIS CATALOG
CAN BE ALTERED AND SHIPPED
IN LESS THAN 48 HOURS**



1/2" Shank - Right Hand Cut

Made from high speed steel – straight tooth.
One piece construction. Specials quoted on request.

Catalog No.	Diam. x Width	Price	w/TiN	Catalog No.	Diam. x Width	Price	w/TiN	Catalog No.	Diam. x Width	Price	w/TiN
NWKY25-164	1/4 x 1/64	24.07	34.85	NWKY87-564	7/8 x 5/64	25.53	37.56	NWKY12-764	1-1/4 x 7/64	37.27	48.64
NWKY25-132	1/4 x 1/32	24.07	34.85	NWKY87-332	7/8 x 3/32	25.53	37.56	NWKY12-18	1-1/4 x 1/8	37.27	48.64
NWKY25-364	1/4 x 3/64	24.07	34.85	NWKY87-764	7/8 x 7/64	25.53	37.56	NWKY12-964	1-1/4 x 9/64	37.27	48.64
NWKY31-164	5/16 x 1/64	24.07	34.85	NWKY87-18	7/8 x 1/8	25.53	37.56	NWKY12-532	1-1/4 x 5/32	37.27	48.64
NWKY31-132	5/16 x 1/32	24.07	34.85	NWKY87-964	7/8 x 9/64	25.53	37.56	NWKY12-1164	1-1/4 x 11/64	37.27	48.64
NWKY31-364	5/16 x 3/64	24.07	34.85	NWKY1-364	1 x 3/64	26.04	38.69	NWKY12-316	1-1/4 x 3/16	37.27	48.64
NWKY37-164	3/8 x 1/64	24.07	34.85	NWKY1-116	1 x 1/16	26.04	38.69	NWKY12-732	1-1/4 x 7/32	37.27	48.64
NWKY37-132	3/8 x 1/32	24.07	34.85	NWKY1-564	1 x 5/64	26.04	38.69	NWKY137-116	1-3/8 x 1/16	41.06	54.06
NWKY37-364	3/8 x 3/64	24.07	34.85	NWKY1-332	1 x 3/32	26.04	38.69	NWKY137-564	1-3/8 x 5/64	41.06	54.06
NWKY50-164	1/2 x 1/64	24.07	34.85	NWKY1-764	1 x 7/64	26.04	38.69	NWKY137-332	1-3/8 x 3/32	41.06	54.06
NWKY50-020	1/2 x .020	24.07	34.85	NWKY1-18	1 x 1/8	26.04	38.69	NWKY137-764	1-3/8 x 7/64	41.06	54.06
NWKY50-132	1/2 x 1/32	24.07	34.85	NWKY1-964	1 x 9/64	26.04	38.69	NWKY137-18	1-3/8 x 1/8	41.06	54.06
NWKY50-364	1/2 x 3/64	24.07	34.85	NWKY1-532	1 x 5/32	26.04	38.69	NWKY137-964	1-3/8 x 9/64	41.06	54.06
NWKY62-164	5/8 x 1/64	24.07	34.85	NWKY1-1164	1 x 11/64	26.04	38.69	NWKY137-532	1-3/8 x 5/32	41.06	54.06
NWKY62-020	5/8 x .020	24.07	34.85	NWKY11-364	1-1/8 x 3/64	30.36	41.82	NWKY137-1164	1-3/8 x 11/64	41.06	54.06
NWKY62-132	5/8 x 1/32	24.07	34.85	NWKY11-116	1-1/8 x 1/16	30.36	41.82	NWKY137-316	1-3/8 x 3/16	41.06	54.06
NWKY62-364	5/8 x 3/64	24.07	34.85	NWKY11-564	1-1/8 x 5/64	30.36	41.82	NWKY137-732	1-3/8 x 7/32	41.06	54.06
NWKY62-116	5/8 x 1/16	24.07	34.85	NWKY11-332	1-1/8 x 3/32	30.36	41.82	NWKY15-116	1-1/2 x 1/16	47.77	61.70
NWKY62-564	5/8 x 5/64	24.07	34.85	NWKY11-764	1-1/8 x 7/64	30.36	41.82	NWKY15-564	1-1/2 x 5/64	47.77	61.70
NWKY75-132	3/4 x 1/32	25.53	36.60	NWKY11-18	1-1/8 x 1/8	30.36	41.82	NWKY15-332	1-1/2 x 3/32	47.77	61.70
NWKY75-364	3/4 x 3/64	25.53	36.60	NWKY11-964	1-1/8 x 9/64	30.36	41.82	NWKY15-764	1-1/2 x 7/64	47.77	61.70
NWKY75-116	3/4 x 1/16	25.53	36.60	NWKY11-532	1-1/8 x 5/32	30.36	41.82	NWKY15-18	1-1/2 x 1/8	47.77	61.70
NWKY75-564	3/4 x 5/64	25.53	36.60	NWKY11-1164	1-1/8 x 11/64	30.36	41.82	NWKY15-964	1-1/2 x 9/64	47.77	61.70
NWKY75-332	3/4 x 3/32	25.53	36.60	NWKY12-364	1-1/4 x 3/64	37.27	48.64	NWKY15-532	1-1/2 x 5/32	47.77	61.70
NWKY75-764	3/4 x 7/64	20.65	36.60	NWKY12-116	1-1/4 x 1/16	37.27	48.64	NWKY15-1164	1-1/2 x 11/64	47.77	61.70
NWKY87-364	7/8 x 3/64	25.53	36.60	NWKY12-564	1-1/4 x 5/64	37.27	48.64	NWKY15-316	1-1/2 x 3/16	47.77	61.70
NWKY87-116	7/8 x 1/16	25.53	36.60	NWKY12-332	1-1/4 x 3/32	37.27	48.64	NWKY15-732	1-1/2 x 7/32	47.77	61.70

TiN coating Price On Application

Woodruff Keyseat Cutters



10 Piece Set Includes:

- 1 - #204
- 1 - #304
- 1 - #305
- 1 - #605
- 1 - #406
- 1 - #606
- 1 - #806
- 1 - #608
- 1 - #404
- 1 - #405



Available in 41 and 10 piece sets.

Catalog No.	41 Piece Set	List Price
KY set	STR.T.HSS - full set	806.32
STKY set	STG.T.HSS - full set	981.61
CKY set	STR.T.Cobalt - full set	1051.73
CSTKY set	STG.T.Cobalt - full set	1389.07

Catalog No.	10 Piece Set	List Price
KY - 10 pack	STR.T.HSS - 10 pc set	158.47
STKY - 10 pack	STG.T.HSS - 10 pc set	192.12
CKY - 10 pack	STR.T.Cobalt - 10 pc set	224.37
CSTKY - 10 pack	STG.T.Cobalt - 10 pc set	275.56

Arbor Type

All staggered tooth cutters with the same amount of teeth can be interlocked by grinding hubs.

These cutters are 1/32" larger in diameter than the normal size to allow for resharping.

Catalog No.	Old Std.	Cutter Diam.	Width	Hole Size	No. of Teeth	List Price	w/TiN Coating
K100	26	2-1/8	3/16	3/4	14	53.44	65.98
K102	27	2-1/8	1/4	3/4	14	55.81	68.35
K104	28	2-1/8	5/16	3/4	14	58.75	75.22
K106	29	2-1/8	3/8	3/4	14	61.28	77.74
K108	R	2-3/4	1/4	1	18	68.01	80.56
K110	S	2-3/4	5/16	1	18	75.87	92.33
K112	T	2-3/4	3/8	1	18	75.87	92.33
K114	U	2-3/4	7/16	1	18	78.39	99.11
K116	V	2-3/4	1/2	1	18	81.76	102.47
K118	30	3-1/2	3/8	1	18	97.74	114.20
K120	31	3-1/2	7/16	1	18	103.63	124.35
K122	32	3-1/2	1/2	1	18	105.17	125.88
K124	33	3-1/2	9/16	1	18	115.97	144.97
K126	34	3-1/2	5/8	1	18	115.97	144.97
K128	35	3-1/2	11/16	1	18	127.46	156.48
K130	36	3-1/2	3/4	1	18	127.46	156.48



Plain Milling Cutters

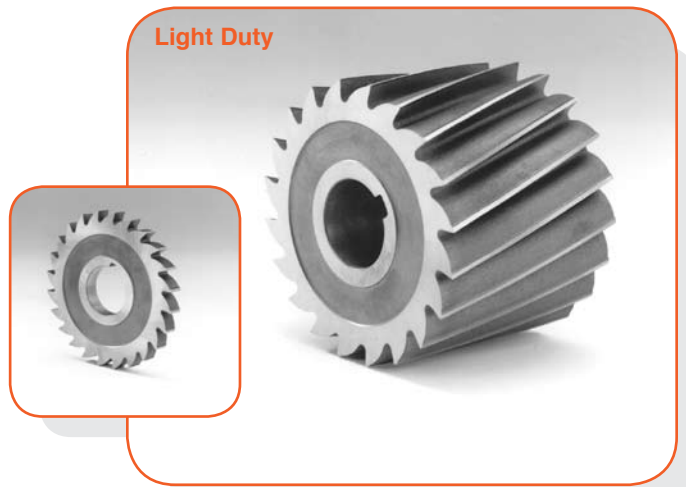
CORNER RADIUS-ALTERED WIDTH
ALL TOOLS IN THIS CATALOG
CAN BE ALTERED AND SHIPPED
IN LESS THAN 48 HOURS

Light Duty

Used for light milling or finish cuts.
Cutters less than 3/4" width have straight teeth.
Cutters 3/4" wide and over have spiral teeth.
Cutters come with Left Hand spiral, Right Hand cut.

Catalog No.	Cutter Diam.	Width	Hole Size	No. of Teeth	List Price	w/TiN Coating
PL2510	2-1/2	3/16	1	18	27.49	40.04
PL2520	2-1/2	1/4	1	18	32.68	45.22
PL2530	2-1/2	5/16	1	18	34.21	50.68
PL2540	2-1/2	3/8	1	18	37.86	54.32
PL2550	2-1/2	7/16	1	18	38.71	59.42
PL2560	2-1/2	1/2	1	18	42.35	63.06
PL2570	2-1/2	5/8	1	18	46.83	75.85
PL2585	2-1/2	3/4	1	14	51.33	80.33
PL2595	2-1/2	1	1	14	62.40	99.89
PL25105	2-1/2	1-1/2	1	14	80.21	134.74
PL25115	2-1/2	2	1	14	96.62	167.75
PL25125	2-1/2	2-1/2	1	14	117.37	205.26
PL25135	2-1/2	3	1	14	126.35	231.22
PL305	3	3/16	1	18	33.80	46.34
PL315	3	1/4	1	18	41.22	53.76
PL325	3	5/16	1	18	46.13	62.60
PL335	3	3/8	1	18	50.21	66.66
PL345	3	7/16	1	18	51.60	72.33
PL355	3	1/2	1	18	53.15	73.87
PL365	3	5/8	1	18	59.45	88.46
PL375	3	3/4	1-1/4	16	62.95	91.97
PL385	3	7/8	1-1/4	16	72.77	110.27
PL395	3	1	1-1/4	16	82.88	120.36
PL3100	3	1-1/4	1-1/4	16	92.12	138.03
PL3110	3	1-1/2	1-1/4	16	101.11	155.64
PL3120	3	2	1-1/4	16	127.05	198.18
PL3130	3	2-1/2	1-1/4	16	170.93	258.84
PL3140	3	3	1-1/4	16	178.37	283.24
PL410	4	1/4	1	24	63.24	77.36
PL420	4	5/16	1	24	66.18	85.20
PL430	4	3/8	1	24	69.14	88.14
PL440	4	1/2	1-1/4	24	83.99	107.40
PL450	4	5/8	1-1/4	24	89.89	121.67
PL455	4	3/4	1-1/4	20	98.86	130.65
PL460	4	1	1-1/4	20	120.45	161.25
PL465	4	1-1/2	1-1/4	20	154.53	212.61
PL470	4	2	1-1/4	20	188.75	264.29
PL475	4	3	1-1/4	20	279.48	389.60
PL480	4	4	1-1/4	20	371.61	522.81

Light Duty



Heavy Duty



Heavy Duty

Heavy Duty Plain Milling Cutters 45°, Left Hand spiral - Right Hand cut.

Catalog No.	Cutter Diam.	Width	Hole Size	No. of Teeth	List Price	w/TiN Coating
PH2501	2-1/2	2	1	8	104.05	175.19
PH2506	2-1/2	4	1	8	178.37	315.82
PH3010	3	1-1/4	1-1/4	8	126.21	172.11
PH3015	3	1-1/2	1-1/4	8	126.21	180.74
PH3020	3	2	1-1/4	8	133.78	204.91
PH3030	3	2-1/2	1-1/4	8	165.05	252.95
PH3040	3	3	1-1/4	8	183.56	288.44
PH3050	3	4	1-1/4	8	237.84	375.28
PH3060	3	6	1-1/4	8	371.61	574.86
PH4010	4	2	1-1/2	10	200.67	276.20
PH4020	4	3	1-1/2	10	294.34	404.47
PH4030	4	4	1-1/2	10	423.64	574.83
PH4040	4	6	1-1/2	10	594.58	818.21

Half Side Milling Cutters



Right Hand Milling Cutters

Catalog No.	Diam.	Width	Hole Size	No. of Teeth	List Price	w/TiN Coating
HSM4750-RH	4	3/4	1-1/4	16	112.18	143.97
HSM5750-RH	5	3/4	1-1/4	18	148.64	195.89
HSM6750-RH	6	3/4	1-1/4	20	193.24	240.48
HSM6100-RH	6	1	1-1/2	20	237.84	295.36

Left Hand Milling Cutters

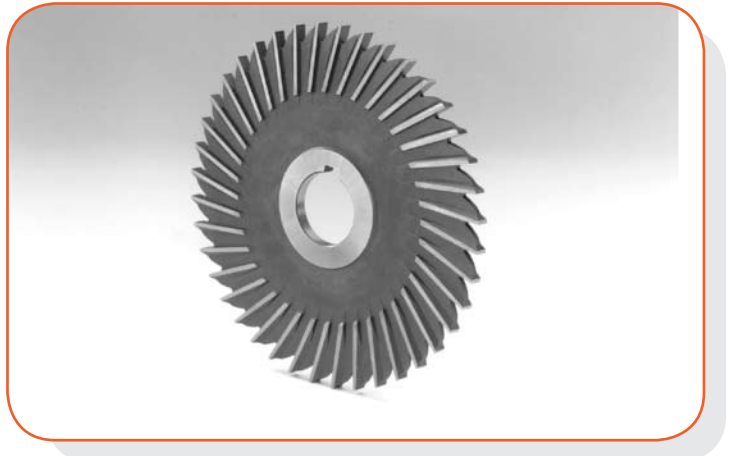
Catalog No.	Diam.	Width	Hole Size	No. of Teeth	List Price	w/TiN Coating
HSM4750-LH	4	3/4	1-1/4	16	112.18	143.97
HSM5750-LH	5	3/4	1-1/4	18	148.64	195.89
HSM6750-LH	6	3/4	1-1/4	20	193.24	240.48
HSM6100-LH	6	1	1-1/2	20	237.84	295.36



Metal Slitting Saws – Straight Tooth

For Cobalt Saws, see page 32.
Saws with Full Radius, see page 21.

**CORNER RADIUS-ALTERED WIDTH
ALL TOOLS IN THIS CATALOG
CAN BE ALTERED AND SHIPPED
IN LESS THAN 48 HOURS**



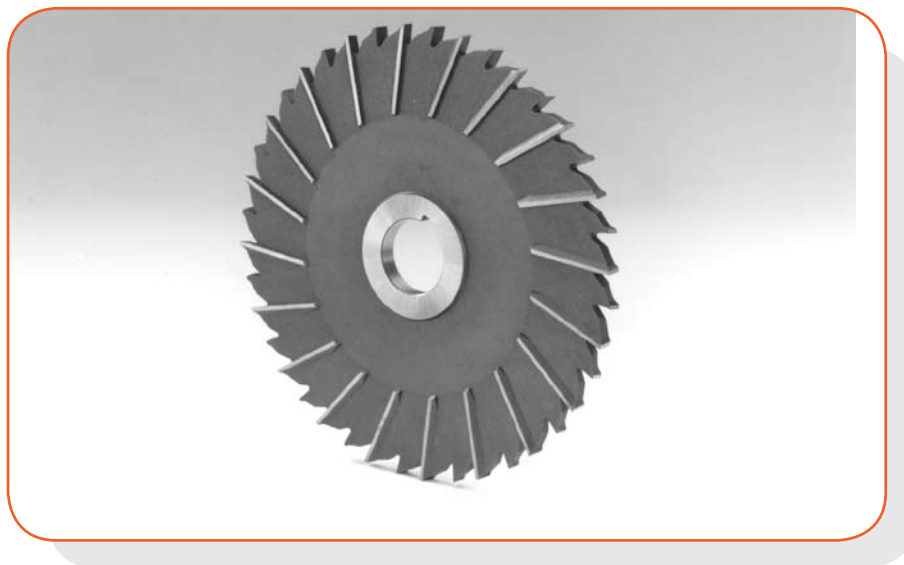
Straight Tooth - With Side Teeth

Catalog No.	Cutter Diam.	Width	Hole Size	No. of Teeth	List Price	w/TiN Coating
SS2562	2-1/2	1/16	7/8	28	43.89	54.71
SS2593	2-1/2	3/32	7/8	28	43.89	54.71
SS25125	2-1/2	1/8	7/8	28	43.89	54.71
SS362	3	1/16	1	32	51.60	62.42
SS378	3	5/64	1	32	71.45	82.27
SS393	3	3/32	1	32	51.60	62.42
SS3109	3	7/64	1	32	72.22	83.04
SS3125	3	1/8	1	32	51.60	62.42
SS3140	3	9/64	1	32	73.62	86.15
SS3156	3	5/32	1	32	51.60	64.15
SS3171	3	11/64	1	32	79.87	92.40
SS3187	3	3/16	1	32	78.11	90.64
SS3218	3	7/32	1	32	75.13	88.27
SS3250	3	1/4	1	32	77.27	89.81
SS462	4	1/16	1	36	82.13	95.42
SS462-1	4	1/16	1-1/4	36	89.20	102.21
SS478	4	5/64	1	36	92.40	105.44
SS478-1	4	5/64	1-1/4	36	92.40	105.44
SS493	4	3/32	1	36	68.44	81.45
SS493-1	4	3/32	1-1/4	36	89.20	102.21
SS4109	4	7/64	1	36	98.16	111.18
SS4109-1	4	7/64	1-1/4	36	98.16	111.18
SS4125	4	1/8	1	36	69.14	82.16
SS4125-1	4	1/8	1-1/4	36	89.20	102.21
SS4140	4	9/64	1	36	100.33	114.46
SS4140-1	4	9/64	1-1/4	36	100.33	114.46
SS4156	4	5/32	1	36	71.38	85.50
SS4156-1	4	5/32	1-1/4	36	96.62	110.74
SS4171	4	11/64	1	36	103.00	117.12
SS4171-1	4	11/64	1-1/4	36	103.00	117.12
SS4187	4	3/16	1	36	73.89	88.03
SS4187-1	4	3/16	1-1/4	36	96.62	110.74
SS4218	4	7/32	1	36	102.51	116.63
SS4218-1	4	7/32	1-1/4	36	102.51	116.63
SS4250	4	1/4	1	36	105.59	119.71
SS4250-1	4	1/4	1-1/4	36	105.59	119.71
SS562	5	1/16	1	40	86.24	130.32
SS562-1	5	1/16	1-1/4	40	106.57	109.99
SS593	5	3/32	1	40	89.20	112.92

Catalog No.	Cutter Diam.	Width	Hole Size	No. of Teeth	List Price	w/TiN Coating
SS593-1	5	3/32	1-1/4	40	118.92	142.67
SS5109	5	7/64	1	40	118.28	142.03
SS5109-1	5	7/64	1-1/4	40	118.28	142.03
SS5125	5	1/8	1	40	92.12	115.87
SS5125-1	5	1/8	1-1/4	40	92.12	115.87
SS5140	5	9/64	1	40	121.09	146.28
SS5140-1	5	9/64	1-1/4	40	121.09	146.28
SS5156	5	5/32	1	40	95.08	120.27
SS5156-1	5	5/32	1-1/4	40	127.88	153.08
SS5171	5	11/64	1	40	133.57	158.75
SS5171-1	5	11/64	1-1/4	40	133.57	158.75
SS5187	5	3/16	1	40	96.62	121.80
SS5187-1	5	3/16	1-1/4	40	127.88	153.08
SS5218	5	7/32	1	40	130.84	156.03
SS5218-1	5	7/32	1-1/4	40	130.84	156.03
SS5250	5	1/4	1	40	136.73	161.91
SS5250-1	5	1/4	1-1/4	40	136.73	161.91
SS693	6	3/32	1	48	113.03	136.76
SS693-1	6	3/32	1-1/4	48	172.49	196.23
SS6109	6	7/64	1	48	164.78	188.51
SS6109-1	6	7/64	1-1/4	48	164.78	188.51
SS6125	6	1/8	1	48	115.97	139.72
SS6125-1	6	1/8	1-1/4	48	115.97	139.72
SS6140	6	9/64	1	48	179.85	205.03
SS6140-1	6	9/64	1-1/4	48	179.85	205.03
SS6156	6	5/32	1	48	170.93	196.13
SS6156-1	6	5/32	1-1/4	48	170.93	196.13
SS6171	6	11/64	1	48	182.93	208.13
SS6171-1	6	11/64	1-1/4	48	182.93	208.13
SS6187	6	3/16	1	48	127.88	153.08
SS6187-1	6	3/16	1-1/4	48	127.88	153.08
SS6218	6	7/32	1	48	170.93	196.13
SS6218-1	6	7/32	1-1/4	48	170.93	196.13
SS6250	6	1/4	1	48	172.49	197.67
SS6250-1	6	1/4	1-1/4	48	172.49	197.67
SS6375	6	3/8	1	48	193.24	223.98
SS6375-1	6	3/8	1-1/4	48	193.24	223.98
SS8125-1	8	1/8	1-1/4	42	231.94	268.02
SS8187-1	8	3/16	1-1/4	42	245.26	284.41
SS8250-1	8	1/4	1-1/4	42	319.58	358.72

Metal Slitting Saws – Staggered Tooth

For Cobalt Saws, see page 32.



Staggered Tooth

The staggered tooth metal slitting saws have side chip clearance and peripheral teeth which provide an alternative shearing action. This allows for faster chip removal and deeper cuts when a heavy feed is necessary.

Catalog No.	Cutter Diam.	Width	Hole Size	No. of Teeth	List Price	w/TiN Coating
STS362	3	1/16	1	28	92.98	103.80
STS378	3	5/64	1	28	95.91	106.75
STS393	3	3/32	1	28	76.57	87.39
STS3109	3	7/64	1	28	92.12	102.95
STS3125	3	1/8	1	28	77.27	88.10
STS3140	3	9/64	1	28	94.32	106.86
STS3156	3	5/32	1	28	78.39	90.93
STS3171	3	11/64	1	28	84.84	97.38
STS3187	3	3/16	1	28	57.64	70.18
STS3218	3	7/32	1	28	84.41	96.96
STS3250	3	1/4	1	28	85.47	98.02
STS462	4	1/16	1	32	115.97	129.00
STS478	4	5/64	1	32	118.92	131.93
STS493	4	3/32	1	32	98.16	111.18
STS4109	4	7/64	1	32	117.16	130.19
STS4125	4	1/8	1	32	97.74	110.76
STS4140	4	9/64	1	32	120.32	134.44
STS4156	4	5/32	1	32	104.05	118.17
STS4171	4	11/64	1	32	122.00	136.13
STS4171-1	4	11/64	1-1/4	32	122.00	136.13
STS4187	4	3/16	1	32	78.39	92.51
STS4187-1	4	3/16	1-1/4	32	78.39	92.51
STS4218	4	7/32	1	32	121.86	135.98
STS593	5	3/32	1	36	151.60	175.33

Catalog No.	Cutter Diam.	Width	Hole Size	No. of Teeth	List Price	w/TiN Coating
STS5125	5	1/8	1	36	145.69	169.44
STS5140	5	9/64	1	36	145.84	171.03
STS5156	5	5/32	1	36	151.60	176.77
STS5156-1	5	5/32	1-1/4	36	151.60	176.77
STS5171	5	11/64	1	36	165.48	190.66
STS5187	5	3/16	1	36	107.00	132.19
STS5187-1	5	3/16	1-1/4	36	120.60	145.79
STS5218	5	7/32	1	36	151.60	176.77
STS5250	5	1/4	1	36	107.83	133.02
STS6125	6	1/8	1	40	178.37	202.12
STS6125-1	6	1/8	1-1/4	40	178.37	202.12
STS6140	6	9/64	1	40	172.49	197.67
STS6156	6	5/32	1	40	196.18	221.37
STS6156-1	6	5/32	1-1/4	40	196.18	221.37
STS6171	6	11/64	1	40	186.51	211.69
STS6187	6	3/16	1	40	130.84	156.03
STS6187-1	6	3/16	1-1/4	40	130.84	156.03
STS6218	6	7/32	1	40	200.67	225.85
STS8125	8	1/8	1	48	328.14	364.22
STS8125-1	8	1/8	1-1/4	48	328.14	364.22
STS8187-1	8	3/16	1-1/4	48	260.13	299.26
STS8250-1	8	1/4	1-1/4	48	264.61	303.76

Plain Metal Slitting Saws

Concave Sides Without Side Teeth

These saws are made with a standard keyway and the sides are ground concave to a hub for clearance. It is recommended that these saws be revolved by a key extending into the collars on both sides.

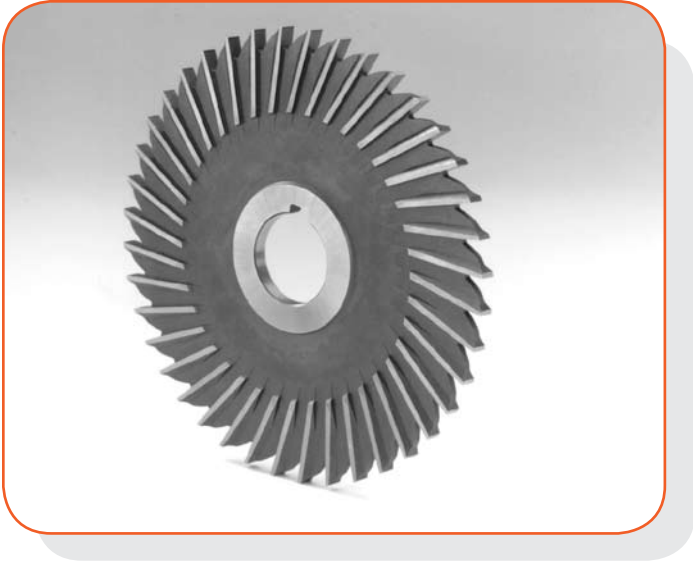


**CORNER RADIUS-ALTERED WIDTH
ALL TOOLS IN THIS CATALOG
CAN BE ALTERED AND SHIPPED
IN LESS THAN 48 HOURS**

Catalog No.	Cutter Diam.	Width	Hole Size	No. of Teeth	List Price	w/TiN Coating
PS2531	2-1/2	1/32	7/8	28	22.99	33.83
PS2548	2-1/2	3/64	7/8	28	22.99	33.83
PS2562	2-1/2	1/16	7/8	28	22.99	33.83
PS2593	2-1/2	3/32	7/8	28	22.99	33.83
PS25125	2-1/2	1/8	7/8	28	24.96	35.78
PS331	3	1/32	1	32	26.09	36.91
PS348	3	3/64	1	32	26.09	36.91
PS362	3	1/16	1	32	27.49	38.31
PS378	3	5/64	1	32	36.74	47.56
PS393	3	3/32	1	32	27.49	38.31
PS3109	3	7/64	1	32	42.00	52.82
PS3125	3	1/8	1	32	27.49	38.31
PS3140	3	9/64	1	32	44.17	56.71
PS3156	3	5/32	1	32	27.49	40.04
PS3171	3	11/64	1	32	50.48	63.03
PS3187	3	3/16	1	32	48.38	60.92
PS431	4	1/32	1	36	33.51	46.54
PS446	4	3/64	1	36	33.51	46.54
PS462	4	1/16	1	36	33.51	46.54
PS478	4	5/64	1	36	58.89	71.92
PS493	4	3/32	1	36	37.71	50.75
PS493-1	4	3/32	1	36	44.32	50.75
PS4109	4	7/64	1	36	62.40	75.42
PS4125	4	1/8	1	36	36.74	49.77
PS4140	4	9/64	1	36	65.21	79.34
PS4156	4	5/32	1	36	43.47	57.60
PS4171	4	11/64	1	36	69.56	83.68
PS4187	4	3/16	1	36	44.17	58.30
PS562	5	1/16	1	40	45.30	69.04
PS578	5	5/64	1	40	82.94	106.69
PS593	5	3/32	1	40	48.93	72.68
PS5109	5	7/64	1	40	90.45	114.20
PS5125	5	1/8	1	40	57.42	81.17
PS5125-1	5	1/8	1-1/4	40	57.42	81.17
PS5140	5	9/64	1	40	94.95	119.95
PS5140-1	5	9/64	1-1/4	40	94.65	119.95
PS5156	5	5/32	1	40	60.27	85.46
PS5187	5	3/16	1	40	63.59	88.79
PS693	6	3/32	1	48	74.33	98.06
PS6125	6	1/8	1	48	77.27	101.00
PS6125-1	6	1/8	1-1/4	48	77.27	101.00
PS6187	6	3/16	1	48	86.24	111.43
PS6187-1	6	3/16	1-1/4	48	86.24	111.43
PS8125	8	1/8	1	48	140.51	176.58
PS8125-1	8	1/8	1-1/4	48	140.51	176.58

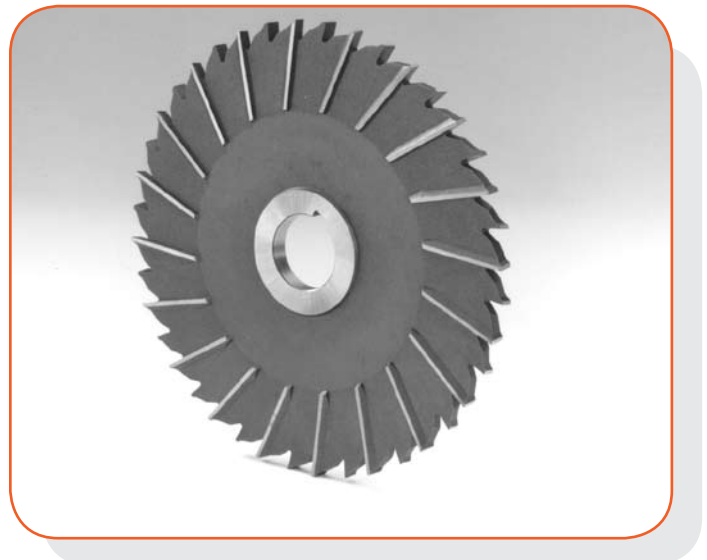
Cobalt Slitting Saws – Straight Tooth

Catalog No.	Cutter Diam.	Width	Hole Size	List Price	w/TiN Coating
CSS362	3	1/16	1	87.98	98.80
CSS393	3	3/32	1	90.88	101.70
CSS3125	3	1/8	1	96.57	107.40
CSS3156	3	5/32	1	99.21	111.75
CSS3171	3	11/64	1	105.93	118.45
CSS3187	3	3/16	1	105.93	118.45
CSS3250	3	1/4	1	110.73	123.27
CSS462	4	1/16	1	142.69	155.71
CSS462-1	4	1/16	1-1/4	142.69	155.71
CSS493	4	3/32	1	144.58	157.94
CSS493-1	4	3/32	1-1/4	144.58	157.94
CSS4125	4	1/8	1	151.29	164.30
CSS4125-1	4	1/8	1-1/4	151.29	164.30
CSS4156	4	5/32	1	157.79	172.89
CSS4156-1	4	5/32	1-1/4	157.79	172.89
CSS4187	4	3/16	1	159.48	173.61
CSS4187-1	4	3/16	1-1/4	159.48	173.61
CSS4250	4	1/4	1	166.61	180.75
CSS4250-1	4	1/4	1-1/4	166.61	180.75
CSS6125-1	6	1/8	1-1/4	265.12	288.86
CSS6156-1	6	5/32	1-1/4	277.78	301.51
CSS6187-1	6	3/16	1-1/4	280.56	304.30
CSS6250-1	6	1/4	1-1/4	282.73	306.47



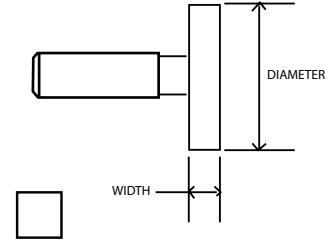
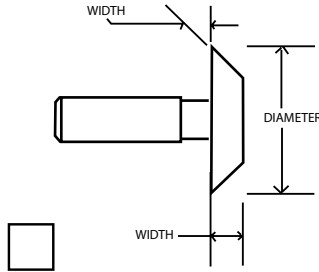
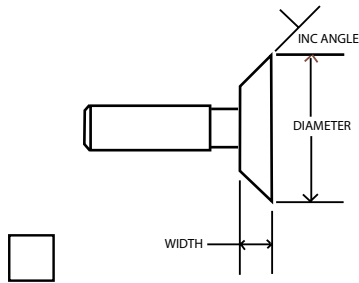
Cobalt Slitting Saws – Staggered Tooth

Catalog No.	Cutter Diam.	Width	Hole Size	List Price	w/TiN Coating
CSTS3125	3	1/8	1	115.07	125.88
CSTS3156	3	5/32	1	120.58	131.40
CSTS3187	3	3/16	1	123.79	134.60
CSTS3250	3	1/4	1	126.11	136.93
CSTS4125	4	1/8	1	154.05	167.03
CSTS4125-1	4	1/8	1-1/4	154.05	167.03
CSTS4156	4	5/32	1	164.99	179.13
CSTS4156-1	4	5/32	1-1/4	164.99	179.13
CSTS4187	4	3/16	1	169.34	183.48
CSTS4187-1	4	3/16	1-1/4	169.34	183.48
CSTS4250	4	1/4	1	176.49	190.63
CSTS4250-1	4	1/4	1-1/4	176.49	190.63
CSTS6125-1	6	1/8	1-1/4	272.86	300.06
CSTS6156-1	6	5/32	1-1/4	281.75	300.46
CSTS6187-1	6	3/16	1-1/4	286.29	311.01
CSTS6250-1	6	1/4	1-1/4	304.43	299.16



SHANK TYPE SPECIALS

**PLEASE FILL OUT AND FAX TO 203-281-4197
FOR A QUICK QUOTATION**



DIMENSION: Diameter _____
 Width _____
 Inc Angle _____
 Shank Dia _____
 Radius _____
 Number of Teeth _____

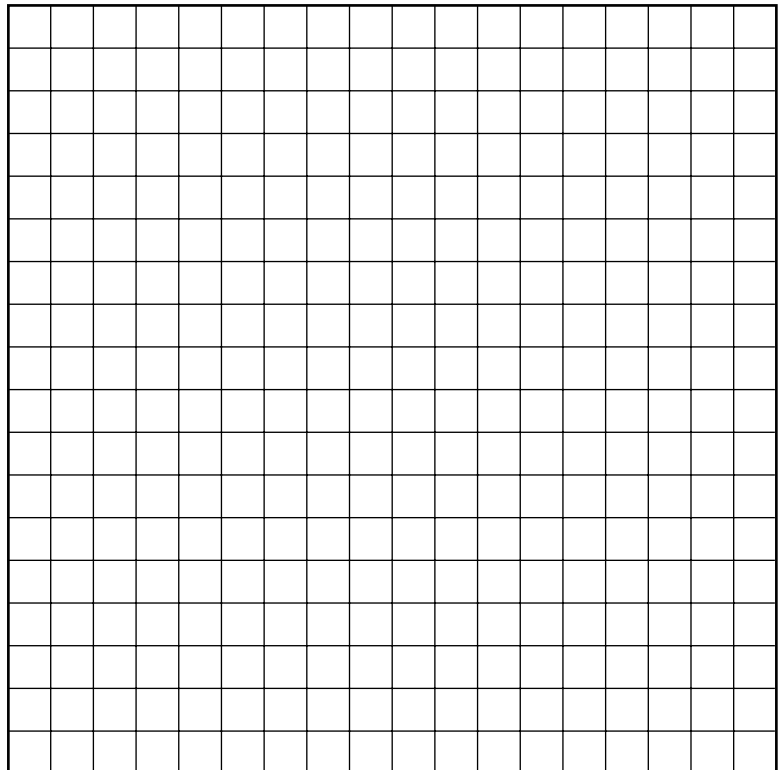
MATERIAL : High Speed Steel
 M-42 Cobalt
 T-15 Cobalt
 Carbide Tipped

COATING : TiN
 TiALN
 TiCN
 UnCoated

QUANTITY : ONE
 TWO
 THREE
 SIX
 TWELVE
 OTHER _____

Tooth Style : Straight Tooth
 Staggered Tooth
 Right Hand
 Left Hand
Side Teeth : With Side Teeth
 Without Side Teeth

Use this grid to draft your cutter.
Please provide any special features and dimensions.



COMPANY NAME _____ **PHONE** _____

CONTACT NAME _____ **FAX** _____

FEEDS & SPEEDS

Feeds & speeds are a starting recommendation only. Factors such as machine, fixture and tooling rigidity, horsepower available, coolant application and others will affect the performance significantly. Please read machine operators instructions and use all safety shields and glasses before performing these operations.

MAT CLASS	MATERIAL	BRINELL	CARB SIDEMILLING		HSS SIDEMILLING		CARB KEYSEATING		HSS KEYSEATING	
			SFPM	IPT	SFPM	IPT	SFPM	IPT	SFPM	IPT
NON FERROUS SOFT	ALUMINUM ALLOY-WROUGHT	30/150	1000-2000	.004-.008	600-700	.002-.007	1200	.002-.006	600-700	.002-.007
	MAGNESIUM ALLOY	50/90	750-1500	.004-.008	400-500	.002-.007	1000	.002-.006	400-500	.002-.007
	NON METAL-PLASTIC	XXX	1500-3000	.004-.008	800-1000	.002-.007	1500	.002-.006	800-1000	.002-.007
	ZINC ALLOY-CAST	80/100	750-15000	.004-.008	400-500	.002-.007	750-1000	.002-.006	400-500	.002-.007
NON FERROUS HARD	ALUMINUM BRONZE	40/175	200-600	.005-.010	100-300	.002-.007	200-600	.002-.006	100-300	.002-.007
	BRASS ALLOY FREE CUTTING - LEADED	10/100	400-800	.003-.006	175-400	.002-.007	400-550	.002-.006	175-400	.002-.007
	NICKEL SILVER	10/100	200-400	.004-.008	70-150	.002-.007	200-400	.002-.006	70-150	.002-.007
	COPPER ALLOY TOUGH	40/200	200-500	.003-.006	80-175	.002-.007	200-500	.002-.006	80-175	.002-.007
CAST IRONS	DUCTILE CAST IRON-AUSTENITIC	120/275	75-150	.004-.008	40-60	.001-.005	75-150	.002-.006	40-60	.001-.005
	DUCTILE CAST IRON-FERRITIC	140/270	250-400	.002-.004	40-60	.001-.005	200-400	.002-.006	40-60	.001-.005
	DUCTILE CAST IRON-MARTENSITIC	270/440	250-300	.003-.006	40-60	.001-.005	150-350	.002-.006	40-60	.001-.005
	GREY-PEARLITIC	220/320	120-300	.002-.004	40-60	.001-.005	150-300	.002-.006	40-60	.001-.005
	GRAY-FERRITIC	110/240	250-425	.003-.006	40-60	.001-.005	220-410	.002-.006	40-60	.001-.005
	MALLEABLE CAST IRON-MARTENSIC	200/320	130-225	.002-.004	100-130	.001-.005	130-300	.002-.006	100-130	.001-.005
LOW CARBON STEELS	LOW AND MEDIUM CARBON-FREE MACH	100/250	250-500	.003-.006	50-70	.001-.005	200-500	.001-.005	50-70	.001-.005
	LOW AND MEDIUM CARBON-WROUGHT	100/375	200-400	.002-.004	30-40	.001-.005	200-400	.001-.005	30-40	.001-.005
MEDIUM STRENGTH STEEL	LOW AND MEDIUM CARBON ALLOY-FREE	100/275	200-400	.002-.004	15-45	.001-.005	200-400	.001-.005	15-45	.001-.005
	LOW AND MEDIUM CARBON ALLOY-STEEL	85/375	150-300	.002-.004	30-35	.001-.005	130-330	.001-.005	30-35	.001-.005
	STAINLESS 400	135/325	200-400	.002-.004	15-45	.0005-.002	135-375	.001-.005	15-45	.0005-.002
	STAINLESS 400-FREE MACHINING	135/275	250-500	.003-.006	15-45	.0005-.002	250-500	.001-.005	15-45	.0005-.002
HIGH STRENGTH	HIGH STRENGTH STEEL-WROUGHT-TOOL	175/400	75-150	.003-.006	10-15	.0005-.002	75-200	.001-.004	10-15	.0005-.002
HIGH TEMP ALLOYS	HIGH TEMP NICKEL/IRON BASE ALLOY	140/300	50-150	.002-.004	5-20	.0005-.002	50-150	.001-.004	5-20	.0005-.002
	STAINLESS STEEL-300 SERIES	135/375	75-150	.002-.004	15-25	.0005-.002	75-175	.001-.004	15-25	.0005-.002
	STAINLESS-PH SERIES	150/440	75-150	.002-.004	15-25	.0005-.002	75-175	.001-.004	15-25	.0005-.002
	TITANIUM ALLOY	110/380	100-200	.002-.004	15-25	.0005-.002	75-200	.001-.004	15-25	.0005-.002

RPM = SFPM X 3.82 / CUTTER DIAMETER

RPM IPM = IPT X RPM X # TEETH

IPT = INCHES PER TOOTH

IPM = INCHES PER MINUTE

RPM = ROTATION PER MINUTE

SFPM = SURFACE FEET PER MINUTE

CUTTER DIAMETER = DIAMETER OF CUTTER IN INCHES

**Take
advantage of**

Just-In-Time Tooling

There's no reason for you to order special cutters long in advance of your actual need for them, not when you have Moon Cutter to lean on.

You'll be leaning on Moon's expertise in design and production – more than forty years of it. Our complete in-house capabilities (which also include heat treating) enable us to deliver the finest quality "specials" almost as fast as you can design them.

And you'll get them for just-in-time tooling...you can depend on it!

Standard Cutters In Stock!

Main Office:

**Moon Cutter Company, Inc.
2969 State Street
Hamden, Connecticut 06517**

Toll Free: 1-800-243-2035

Telephone: 203-288-9249

Fax: 203-281-4197

West Coast Warehouse:

**M.C. Sales and Marketing
15178 Transistor Lane
Huntington Beach, California
92649**

Toll Free: 1-888-299-8665

Telephone: 714-901-8589

Fax: 714-901-8579



**MOON
Cutter Co., Inc.**

**2969 State Street • Hamden, CT 06517
Telephone: 1-800-243-2035 • 203-288-9249
Fax: 203-281-4197 • www.mooncutter.com**